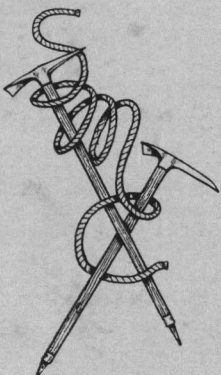


THE SCOTTISH MOUNTAINEERING CLUB JOURNAL

EDITED BY J. H. B. BELL



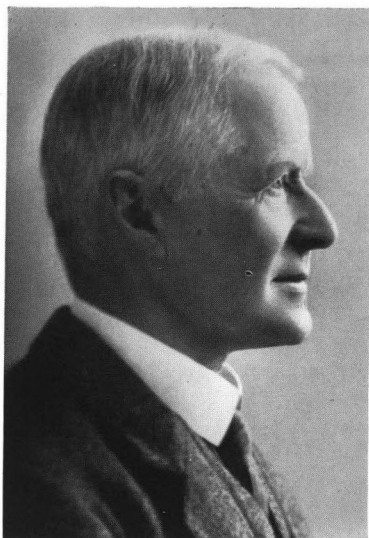
	PAGE
Foreword	1
The Club in Retrospect. A. E. Maylard, G. Thomson, T. H. Bryce, G. A. Solly, W. Barrow	6
"An Caisteal." T. F. S. Campbell	32
The "Journal." F. S. Goggs	33
Pan. Lord Tweedsmuir	41
Spring. T. F. S. Campbell	43
Salvationist and Ultramontane. J. A. Parker and W. N. Ling	44
A Short History of Scottish Climbing—I. H. MacRobert	50
Rum. E. W. Hodge	59
The Inaccessible Pinnacle. Lawrence Pilkington	63
New Climbs—Proceedings—Notes—Reviews—J.M.C.S.	

THE SCOTTISH MOUNTAINEERING CLUB
SYNOD HALL, CASTLE TERRACE, EDINBURGH, 1

Agents : EDINBURGH, Douglas & Foulis ; GLASGOW, Wm. Porteous & Co.

All Notices for November Number should be sent to the Hon. Editor, DR J. H. B. BELL, THE KNOWE, CLACKMANNAN, as soon as possible, and not later than 30th September 1939.

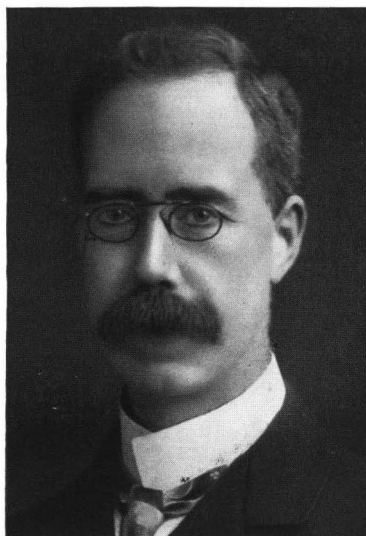
Copies of the *Journal* can be obtained from the Agents or through any Bookseller.



W. W. NAISMITH



A. ERNEST MAYLARD



GILBERT THOMSON

THE FOUNDER OF THE CLUB
and
TWO FOLLOWERS

JUBILEE NUMBER

THE SCOTTISH
MOUNTAINEERING
CLUB JOURNAL

VOL. XXII.

APRIL 1939

No. 127.

FOREWORD.

" I feel confident that this Club will not only enable us to extend and gratify our love of the mountains, but that from the basis of that common love, this night will prove the beginning of a personal friendship and intimacy amongst its members which will be, I trust, as fresh and bracing, might we add everlasting, as the hills themselves. . . . "

" The love of scenery and of hills is implanted in the heart of every Scot as part of his very birthright; our mountains have been the moulders of our national character; . . . in Scotland, every man has his hill or mountain at his door; every man is potentially a mountaineer; and a mountaineering club, in its simple sense, must thus have included nothing less than the entire nation. . . . "

" What is our great and glorious bond of union in this Club? . . . best of all ' to put a stiff back up the stae brae ' of stone, or heather, or snow, and on to that top which has so long eluded us, where we seem to breathe something else than air, and from which we look down on every side upon a scene untainted by work of man, just as it came fresh from the Creator's hand. . . . "

Professor G. G. RAMSAY, S.M.C.J., Vol. I., p. 1.

Thus Professor Ramsay, our first President, at the first Annual Dinner of the Club on 12th December 1889: and the intervening half century has surely justified these hopes and aspirations. Of the Original Members there are only nine survivors, of whom five were present at

our Fiftieth Dinner last December, and we have great pleasure in welcoming five of them as contributors to the pages of this, the Jubilee number of the *Journal*. Two of these contributions take the form of congratulatory messages to the Club, and are appropriately inserted in this place.

KIRKLANDS,
HERMISTON, MIDLOTHIAN,
25th July 1938.

The Editor,
The Scottish Mountaineering Club Journal.

DEAR SIR,

I send through you my congratulations to the Club on its attaining its fiftieth year. In doing so I would like, as an original member who played a modest part in starting the Club in its early years, to pay tribute to those members who pioneered the Club into the true way of fulfilling its objects and placed it on a sure foundation. To them and to those who have followed in their steps we owe the high prestige of the Club for enterprise and literature, and I record my belief that present and future members will see to it that this high prestige will be maintained, so that when the centenary of the Club is reached the membership of it will then be, as now, a proud privilege.

I am,

Yours very truly,

R. A. ROBERTSON.

KEYNES PLACE,
HORSTED KEYNES,
SUSSEX.

DEAR MR EDITOR,

As an original member of the S.M.C. you have invited me to say a few words on the occasion of its fiftieth anniversary, and I very gladly do so.

Migration to the south and advancing years have prevented me of late from taking any active part in the Club's proceedings, though my interest in the Club has in no way suffered, and I still recall with lively pleasure the many meets and other functions I attended in its

earlier days. Some of the happiest and healthiest times of my life have been passed among the mountains and glens of Scotland in the congenial company of other original members, of whom so few now remain.

The Club started from small beginnings, following the efforts of an enthusiastic band of mountain lovers who held that of all the sports none can surpass mountaineering in the development of a man's higher qualities, but that its enjoyment to the full could, for most of them, only be reached in company with kindred spirits. Hence the formation of a club which has proved so great a success and the means of forming so many lifelong friendships.

I have, Mr Editor, no hair-raising adventures to relate, but wish to say how proud I am to be one of the original members.

It is with feelings of gratitude and pleasure that I write these words wishing for the Club a continuance of the success it has in the past so richly earned.

In case you may consider it of interest, I am sending you a group photo * which pictures a number of original members who attended the Meet at Inveroran in the winter of 1894.

Yours sincerely,

W. R. LESTER.

This number of the *Journal* is mainly a review of the history of the Club from various angles. It is an interesting and an inspiring record, and the Editor has had little more to do than accept the contributions which have been so freely offered by the older members. As is almost unavoidable in such cases, some topics and personalities have not been adequately dealt with or mentioned; for example, the contributors themselves, who have been prominent members as well as mountaineers, with a most becoming modesty have almost slipped through the meshes of publicity. For such a mischance the Editor would be held responsible, and he must make amends where this is possible.

The life and vigour of a club owes much to its officials, and we append a list of the Secretaries, Treasurers, and

* See illustration facing p. 6.

Librarians since the foundation of the Club ; the Editors are mentioned elsewhere.

From 1914 to 1927 the finances of the Club were in the capable hands of Harry MacRobert. But of all the officials the Secretary occupies the key position and is most subject to unexpected calls upon his time and energy. From the year 1902 until 1930 there were only two Secretaries, Dr Inglis Clark and George Sang, and the Club owes much to these men. It would be an impertinence on the part of the present writer to appraise such a debt, but the welcome and encouragement given by them to new members remains graven on his memory. Such a spirit makes a Club a living reality, and it was shown by many of the "old guard." In addition to this, Dr Clark in particular did a great deal by means of lantern lectures to popularise climbing and the Scottish mountains.

I remember one Easter day on Garbheinn of Ardgour being passed on the Great Ridge by, and then following on behind, that well-known trio—Ling, Sang and Glover. At my first Meet at Kinlochewe, Easter 1923, I was welcomed and encouraged by Sang and also by that veteran G. A. Solly, who ten years later honoured Myles and myself by traversing Binnein Mor and Na Gruagaichean with us, although by then he was several years ahead of the allotted span of three score and ten. In Solly's article in this number many names are mentioned, but it is not possible to form an opinion as to the mountaineering eminence of the author of the article. No further justification is needed for the insertion of a brief note on Solly's climbing career.

A Jubilee number should look to the future as well as remember the past, but its size has limits, so in our next number the "History of Scottish Climbing" will be continued up to the present day, and new names will appear, some of which may not be directly associated with our Club. Conditions may have changed since the brave days of the pioneers, but we have every hope and confidence that the Club and its *Journal* will continue worthily to occupy the place which their founders made for them.

THE EDITOR.

Godfrey A. Solly.

In Scotland Solly was concerned in the first recorded ascents of the east face of Buachaille Etive and of the Tower Ridge of Nevis. In the Lakes he was on the first complete ascent of the Arrowhead and of the Eagle's Nest ridges on Great Gable, and he first led the Hand Traverse on the north climb on Pillar Rock.

His Alpine record is considerable, extending from the ascent of the Dent Blanche in a thunderstorm in 1890 to an ascent of the Strahlhorn in post-war days at the age of seventy! His more interesting expeditions include a new route on the Unter Gabelhorn, two first ascents in the Füsshörner, a traverse of Mont Blanc, a new route on the Oldenhorn and the north face of the Pigne d'Arolla.

In 1893 he was with Cockin and Newmarch in the Caucasus where Ushba and Tiktengen were attempted and a new pass was made. In 1894 he went there again with Collier and Newmarch; they made first ascents of Bak peak and of Mashkin and again attempted Ushba. In 1909 he made various expeditions in the Canadian Rockies.

Some Past Office-bearers of the Club.*Secretaries.*

A. E. Maylard	1889-1896
Gilbert Thomson	1897-1901
W. Inglis Clark	1902-1913
George Sang	1914-1930
A. Harrison	1931-1935

Treasurers.

Charles Gairdner	1889-1892
W. W. Naismith	1893-1900
R. Graham Napier	1901-1906
Walter Nelson	1907-1913
Harry MacRobert	1914-1927
E. C. Thomson	1928-1936

Librarians.

Gilbert Thomson	1889-1901
H. S. G. Lawson	1902
F. S. Goggs	1903-1909
A. W. Russell	1910-1918
G. B. Green	1919-1924
G. Murray Lawson	1925-1932
Malcolm Matheson	1933-1934

Guide Books, General Editor.

Rev. A. E. Robertson	1931-
----------------------	---	---	---	---	-------

THE CLUB IN RETROSPECT.

I.—Its Origin and Growth.

By A. Ernest Maylard.

IN October 1881 I came to Glasgow from Guy's Hospital in London, where I was a Demonstrator in Anatomy, to teach the same subject in a new extra-mural school which was being started on the lines of Minto House Medical School in Edinburgh. I hadn't a friend in the city, and being fond of the country and of walking I frequently spent my free days, which were usually Saturdays, in tramps about the surrounding country. The winter walks had much attraction for me, especially on the hills. One very memorable tramp was from Aberfoyle to the top of Ben Venue in deep snow. On another very similar occasion I revelled in fighting a blinding snowstorm, trying to get to the top of the Campsie Fells from Strathblane; the wind was so strong that my cap blew off, refusing to proceed any further, taking its own course downwards and compelling me to follow. I used to express my delight in these winter expeditions, and often expressed my surprise that I never met a soul; so I suggested to my newly made acquaintances that the citizens of Glasgow knew little of the beauties of the country around them in winter.

It was with these feelings, arising, as will appear later, from a too limited experience and also a too hasty judgment, that I read one morning in the *Glasgow Herald* a letter from a writer unknown to me expressing sentiments with which I was in full sympathy. This letter was signed by W. W. Naismith, and it was followed by another signed by "Cairn" (subsequently known to be D. A. Archie in collaboration with Gilbert Thomson) supporting the views ventilated by the former writer. I replied by a letter to the *Glasgow Herald* expressing full sympathy with the opinions of these two

-

		16				17		
1	2		12		13	14	15	
10		3	4	5	6	7	8	9

correspondents, and at the same time indicating in what way I thought some action might be taken. I turned to my friend Professor F. O. Bower, who was also a comparative newcomer to the City, but the existence of mutual friends in the South brought us together. Like myself, he too was a lover of walks in the country, frequently leading his students on botanising expeditions to the hills, often in search of high alpine plants. We thought that a public meeting should be advertised if a sufficient number of replies to my letter, favourable to the proposal, were received. As this proved to be the case, a notice was inserted in the *Herald* indicating date and place and inviting all who sympathised with the project. We agreed that no better man could be found to preside at the meeting than Professor George Ramsay, who was himself a member of the Alpine Club. The meeting took place in the rooms of the Christian Institute, Bothwell Street, Glasgow, on 11th February 1889. This day, therefore, may be considered the birthday of the Club. All those present who wished to be so, although they might be only sympathisers with the project, were constituted "Original Members." This accounted for about thirty or forty, but it was subsequently arranged that the number of original members should be extended to the first hundred of those who joined the Club. In the 1893 list of members there were seventy-two such. At the present time, when the Club is celebrating its Jubilee, there are only nine.

Having dealt with the Club in the earliest stages of its formation, I would now like to add a few remarks on its future development.

The Name.—The name by which the Club should be known was naturally one of the earliest considerations in its constitution. The original suggestion was *A Scottish Alpine Club*. Exception was taken to this on the ground that it would possibly diminish its significance by contrasting it with *The Alpine Club*. On the other hand, to call it *The Scottish Mountaineering Club* would give it a sufficiently distinctive designation and lead to no invidious comparisons. This name was agreed to at the

first general meeting called to consider the foundation of the Club.

The Offices of the Club.—Originally there were fifteen posts: An Hon. President, a President, two Vice-Presidents, an Hon. Secretary, an Hon. Editor, an Hon. Treasurer, and eight Members of Committee. Several other posts have been created in order to cope with the increasing functions of the Club. There is one, however, of very recent date to which I wish specially to refer, that of an Hon. Vice-Presidentship; and in doing so I gladly take the opportunity of saying a word or two about the one who was the first to fill it.*

In reading what I have already written on the various factors associated with the foundation of the Club, it will not fail to have attracted the notice of the reader how seldom the name of Naismith appears. A remark fell from the lips of a late President when speaking from the Chair at an Annual Club Dinner in which he alluded to "the three founders of the Club." I ventured to criticise this statement by a letter which subsequently appeared in the *Club Journal*, in which I stated that there was only one founder, and that if the initiation of the project was the original basis of the Club, then Naismith was the single founder. The letter is too long to be more than briefly referred to (Vol. XX., p. 367). Naismith wished to reply to my letter, but I begged him not to do so, as this might open up a useless controversy. His objection to my remarks was based on his own statement to me, that at the meeting called to discuss the formation of the Club he sat at the back of the hall and took no part in the proceedings. That action of taking a back seat is symbolical of his naturally reticent and righteous disposition—I use this latter attribute, which all who knew his deeper nature will appreciate, a modesty of disposition which is exemplified throughout his connection with the Club, as, for instance, in his persistent refusal to accede to the repeatedly expressed desires of his fellow-

* Since the death of W. W. Naismith this office has remained unfilled.

mountaineers to make him President of the Club. But that genuine modesty has not blinded the eyes of his fellow-clubmen to the exceptional merits he possessed as a good comrade and an expert mountaineer. If his own insistence that he had little to do with the actual foundation of the Club be accepted, then surely his comrades in selecting him to the newly instituted—indeed, it was specially instituted for him—post of Hon. Vice-President made a sufficient acknowledgment that both by precept and example he had contributed very considerably to the public prestige of the Club as well as to the unqualified success it had attained.

The Club Journal.—No sooner was the Club instituted than a proposal came from Stott that it should have a journal as a means of recording the exploits of members on the Scottish mountains as well as the conveyance of everything that bore on the sport of mountaineering. This was agreed to at a very early stage of the Club's existence. Stott was elected the first Editor. How successful the *Journal* has become in fulfilling the various objects for which it was founded I do not intend to enlarge upon, the more especially as I believe it will be ably and fully dealt with by other contributors to this Jubilee recognition of the Club's career. But I am tempted to record one little incident in which the Editor and I came into very harmless and amusing conflict; to whom belongs the victory I leave for the reader to judge. I wrote an account of a climb which involved "breech-splitting strides and stomach-scrubbing heaves." And to tell the truth I was rather proud of my compound adjectives, for I felt I had introduced quite a Carlylean flavour into my description. However, it did not seem to have produced the same impression on Stott, whose literary responsibilities as Editor made him doubt the propriety of ventilating such language when applied to a sport so dignified in all its attributes as mountaineering.

The "Guide Book."—Next to the practical indulgence in the sport of mountaineering itself must be regarded the series of excellent Guide Books that the Club has

issued within the last few years; and I may incidentally remark how deeply indebted are the non-contributory members of the Club to those who are responsible for their compilation. These well-bound volumes have found a market not only among the members themselves, but are now frequently used as reference guides by visitors to the Highlands. They serve the inestimable purpose of indicating to all and sundry the beauty of Nature in some of her grandest manifestations. Of course, when the project was originally suggested of producing these "Guides," finance was a serious initial consideration. But here a little incident occurred which I trust I may be pardoned for introducing, as it involves a slight personal effort in furtherance of the project. From some intimate friends I learnt of the former existence of a club which had been extinct for some years, whose members had now nearly all passed away, only two or three surviving. One of these was Professor Ramsay, our first President. There was a certain kinship between this club and our own: it had the suggestive name of "The Gaiter Club." To become a member certain qualifications were requisite, walking necessarily being one. Another was that a statement must be given of the highest ascent accomplished. The members of the Club were mostly men of some distinguished position in the country. Dr Norman Macleod was one of the members, and in answering one of the questions in the schedule when applying for membership, his reply to that concerning the highest ascent was "the Barony Pulpit." All this, however, is by the way. I learnt that there was a considerable amount of capital and accumulated interest in the bank belonging to the Club. For this there was now no outlet, as the Club, like most of its members, was extinct. Fortunately for us, we had an interested survivor, Professor Ramsay. It was to him, therefore, that I appealed for some of this dormant accumulation of the Gaiter Club's wealth for our proposed Guide Book. After consultation with one or two of his co-survivors of the Club, the appeal resulted in our receiving £100. This contribution very materially helped in furthering our project, and with what excellent

results; for at present there are no fewer than eight volumes profusely and beautifully illustrated.

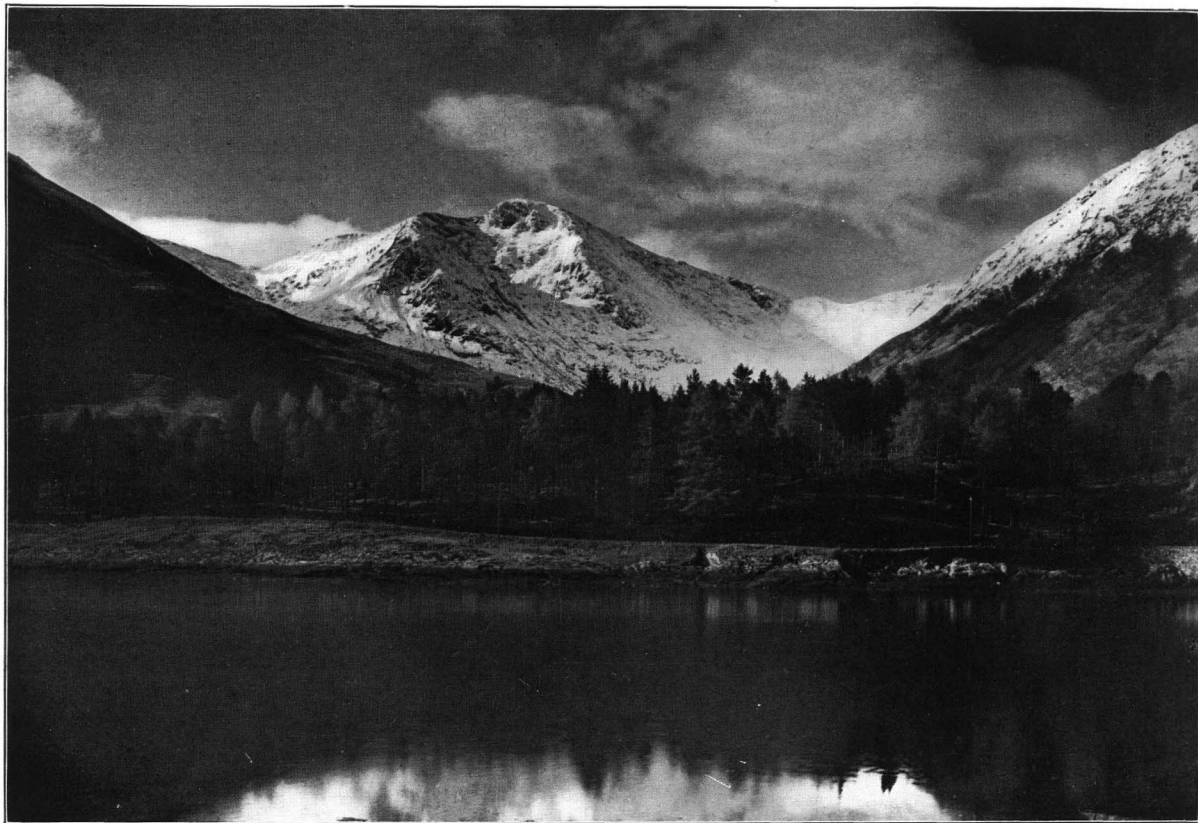
The Club Receptions.—The success of the Annual Receptions tempts me to record how they originated. To do so involves a personal exhibition of individual effort which will, I think, be excused on the grounds of the good example it set. It was during my Presidency that my wife and I gave a Reception in St Enoch's Hotel, Glasgow. I collected books, pictures, photographs, and everything that could bear on the objects and activities of the Club, besides providing refreshments and music by a local orchestra to enliven the proceedings. The invitations were to others than the members of the Club, as I was anxious to make as widely known as possible the good objects for which the Club was instituted. Although the type of the reception has very materially changed, being no longer a personal effort but annually held and arranged by the Club, it is still a social function enjoyed by all who attend it, embracing as it does members with their friends, and as such serves as an excellent advertisement of one of the healthiest pastimes that can be indulged in.

The Club Meets.—To one who can look back to the earliest Meets of the Club, the contrast with those of the present is striking in the extreme, both as regards the number of those who attend them and the kind of activities indulged in. From the half-dozen or so who sat round the fire in the evening at Dalmally Hotel to the crowds that assemble in the spacious lounge and smoke-room of the Loch Awe Hotel there is a contrast which at least speaks well for the numerical progress of the Club; but it is not the same as that cosy and comfortable fireside that some of the old brigade cherish the memory of. Continuous augmentation of numbers leads one's thoughts away into the future, so that one wonders whether what has happened in the case of other clubs with large memberships will take place in our own; that is to say, men will make up separate parties, selecting their own date and place.

Another comparison of the past with the present is

the type of the expedition undertaken. In the early days it was the Munro Table of mountains over 3,000 feet that proved the attraction, and to tick off these, as many as was possible, was the ambition of some. But now such exploits are deemed too simple in themselves to be regarded with any respect. It is to conquer something that impedes progress, and which may result in the addition of a new route. I confess that this development of the sport conveys more credit to it than simply walking up to the top of a hill by some well-made path. For courage, skill, and physical energy are often required far in excess of that demanded for an unimpeded approach to a mountain summit.

The Club Hut.—This should be more correctly designated as the “Charles Inglis Clark Memorial Hut.” It was erected in memory of the son of one of our past Presidents, Dr Inglis Clark. The history of its inception is rather interesting. It was at a dinner in the Alexandra Hotel, Fort William, connected with an Easter Meet, that I ventilated the proposal for the construction of a hut, and my reason for doing so arose in this way. I was wandering up the old path to the summit of the Ben. On arriving at the half-way refuge I found it occupied by two junior members of the Club who were away at the time, but had left all their belongings for a day and a night’s lodging. The rotten wooden building was in a wretched condition, absolutely unfit to be occupied by any human beings. As a medical man I could not but admire the enthusiasm of these two junior mountaineers, that they were willing to undergo such discomforts in the pursuit of their pleasure; but at the same time I recognised the risk they were running in damaging their health for future days by sleeping in such a hovel with wet and wind creeping through innumerable crevices. At the dinner I spoke to those seated near me of the need for a properly constructed hut. Sitting at the side of our esteemed and indefatigable secretary Sang, was the factor of the Ben Nevis Estates, as his guest. To these two, seated some little distance away, I went and stated what I have just narrated above regarding the need



April 1912

SGORR DHEARG FROM NORTH BALLACHULISH

Dr W. Inglis Clark

of a hut. The suggestion was warmly received, and the factor said he would do all he could to help on the project should its inception mature. The next step was to ascertain how and where the money was to be got, for the conveyance of material and the construction of a building far from the supply both of men and material demanded very serious consideration. The thought occurred to me that it might be constructed as a memorial to one or more of our comrades who had lost their lives as the result of the war. There was one outstanding loss which the Club had sustained, and that the only son of one of our most beloved past Presidents, a distinguished climber and a good companion. So I wrote to Inglis Clark, making the suggestion that perhaps the need as well as the personal association might appeal to him. To my great joy he almost at once replied that he and his wife would erect a hut to the memory of their son. I need add nothing further to the subject, but merely state what an inexpressible boon it has been to those who wish to tackle the steep ridges and gullies on the north-east face of the Ben.

I fear that the reading of these rambling reminiscences may pall somewhat on those who desire brevity of description rather than prolixity in detail, but I crave the indulgence that may reasonably be extended to one who is just attaining his four score years and four. Although born in the south of England, and by birth, therefore, an Englishman, there flowed through my mother's veins a strong infusion of healthy Scottish blood from ancestors who bore the name of Scone, and who claimed a far-away association with the hamlet of that name amid the beautiful scenery of Perthshire. If, therefore, as one of their survivors I have written as in an atmosphere of "egoism," accept it all as from the Englishman; but all that merits commendation take as an indication of my Scottish descent, and I for one would be glad that it should be so, and that Scotland and not England should be the ruling factor in the original inception and future destiny of our beloved Club.

II.—Some Reminiscences.

By Gilbert Thomson.

WE who were associated with the formation of the Club had a privilege which our successors could not enjoy. With the exception of a few "tourist" ascents, almost every climb was a new one. We were, in fact, in much the same position as the pioneers of the Alps were some thirty years earlier. The mountains were there, but the mountaineers were not. The only proper route up any mountain was the easiest, and the only suitable time for an ascent was a fine summer day. According to a well-known guide book, "No tourist will think of attempting it (the ascent of Sgurr nan Gillean) in anything but clear and trustworthy weather," and the writer well remembers the pride with which he and an equally inexperienced companion made that ascent under the very competent guidance of John Mackenzie—by the tourist route, of course. It is needless to say how the Club has changed all that.

The history of the Club is dealt with elsewhere in this number, but some notes, largely personal reminiscences, may not be without interest. Naismith's original letter was promptly followed by three others,* and it is one of the present writer's proudest memories that he, in conjunction with the late Mr D. A. Archie, was the first to come to its support by writing the letter signed "Cairn." The real practical work, however, was done by Maylard, who wrote and signed the subsequent letters and who not only arranged the preliminary meeting and took the responsibilities of Honorary Secretaryship, but along with Professor Bower enlisted the co-operation of Professor Ramsay, the last being really a stroke of genius. Its effect can scarcely be overestimated. Ramsay's out-

* The original correspondence is mentioned in Ramsay's article on "The Formation of the Club" (Vol. X., pp. 82-94) and printed *in extenso* in a subsequent number (Vol. XI., pp. 40-43).

standing position as a member of the University, as a mountaineer, and as a citizen was enough to give the movement an unquestioned prestige, and this was strengthened by the standing of those who were brought in by his characteristic enthusiasm and example. It may be of interest to note that he was of a mountaineering family. His elder brother, the late Sir James Ramsay of Bamff, was an original member of the Alpine Club and the author of an article, "Mountaineering in 1855," which appeared in the *Alpine Journal* of August 1914. Sir James was not at first a member of our Club, but he joined it in 1910, his brother being the proposer and the writer having the honour of seconding the nomination.

We cannot claim to have been the first mountaineering club in Scotland, the Cairngorm Club (with which our relations have always been most cordial) having forestalled us by a few months; but we can with justice claim to have been the first to follow the example of the Alpine Club in requiring a climbing qualification from all prospective members, winter experience being essential. For a time membership of the Alpine Club was accepted as being in itself a sufficient qualification, as it no doubt was in a technical sense, but later it was felt that some acquaintance with our Scottish mountains should be required of all members of a Scottish club. The acquaintance now demanded is no slight one, and it may fairly be assumed that any member of our Club has had a fairly extensive mountaineering experience. The original members, who, of course, were a law unto themselves and needed no qualification, are so few in number and so much on the retired list that their exception is of little consequence.

It was only to be expected that a Club so constituted, and with such opportunities for practising climbing in all weathers and at all seasons, should give many recruits to the Alpine Club. At the Coming-of-Age Dinner in 1909 it was pointed out that not only had the Club bred up fifty-four members of the Alpine Club, but that there were at that time more original members who were

also members of the Alpine Club than there were at the beginning, those whom we had lost being more than balanced—as regards numbers—by other original members who by that time had become members of the senior Club.

It is interesting to remember that Naismith in his original letter expressed the fear that members might be difficult to find. The same feeling was expressed at the Thirty-first Annual Meeting (*Journal*, Vol. XV., p. 264). That was, however, immediately after the war, when a sad number of names had been transferred from the roll of members to the Roll of Honour. It was not long before the conditions were thoroughly changed, thanks largely to the enthusiasm of the Junior Mountaineering Club of Scotland, which has sent up numerous and well-qualified recruits. The change has been so complete that again and again it has been suggested that a limitation of the number of Club members might be necessary.

It is clear that mountaineering is growing rapidly in popularity among the Scottish youth, and for this the Club has much of the credit—and the responsibility. Accidents, although far less frequent than in some other areas, are much too common, and in almost every case are due to the neglect of elementary precautions. Twice the Club has issued a serious warning and advice, the last being the insertion in its "Guide Book" and the display at hotels and hostels of a note of the risks which may be incurred and the manner in which these should be avoided. The writer had the privilege of being invited to address a large gathering at one of the Youth Hostels for the express purpose of emphasising this warning; and he was struck not only by the enthusiasm displayed by the young men and women but also, as shown by the subsequent questioning, by their acquaintance with mountaineering technicalities.

In that connection the Cairngorm tragedy of New Year 1928 was the subject of an instructive analysis by the late Professor Gregory (*Glasgow Herald*, 30th March 1928). Two young men perished in a blizzard, and the first suggestion was that they had undertaken something

beyond their powers. Professor Gregory's analysis of the facts, however, indicated the probability that this was not the real cause, but that a comparatively small accident to one had delayed progress to an extent that was fatal to both. Looked at in either light, the warning conveyed is a serious one, and unfortunately more recent experience has shown that it has not been sufficiently observed. To at least one transgression, which was fortunately unattended by any serious result, but which conveys a warning of another sort, the writer must plead guilty. At the last Dinner reference was made by H. MacRobert to the crossing of the Moor of Rannoch by Naismith and the writer from Dalwhinnie to the Meet at Inveroran. That expedition was the direct consequence of a humiliating experience a year earlier. On that previous occasion they had crossed Bidean and the Buchailles (*Journal*, Vol. I., pp. 89-97), and when they reached the road, in full view of the lights of Kingshouse, they lay down on the roadside for a rest before tackling the remaining few hundred yards. Their provisions had given out and the expedition finished in a state of semi-starvation. It was for the purpose of satisfying themselves that this and not an over-ambitious undertaking was the cause of the trouble that the still bigger expedition was planned for the following year.

Our members have been remarkably free from accident. In the half-century of the Club's existence one member has lost his life on the Scottish mountains—surely a sufficient answer to those who regard mountaineering as a dangerous sport. So it is in the absence of sufficient precautions and of common sense. It is instructive also to note that the finance of the Club's Commutation Fund, based on the usual tables of mortality, had to be severely revised, as it was threatened with insolvency owing to the unlooked-for longevity of the members. Few climbers can expect to be brilliant, but all can and ought to be safe, and the latter is much the more valuable characteristic. There are, no doubt, accidents which are unavoidable—the writer had a bad one through being caught in a shower of falling stones on a spur of Helvellyn—but it

is no exaggeration to say that these are far more common on the streets than on the mountains.

"Access to mountains," in the legal sense, has never been a trouble with the Club. From the first, one of its rules has been that its members would respect proprietary and sporting rights, and this has resulted in the most friendly relations between the owners of these rights and the Club. The view has always been held that more was to be got by co-operation than by compulsion. When Professor Bryce's Bill was before Parliament some fifty years ago, a very well-reasoned and temperate article by one of our then prominent members, Mr Parker Smith, of Jordanhill, appeared in *Blackwood's* (August 1891) strongly supporting the Club's attitude; and this was the subject of approving editorial comment in the *Journal* (Vol. I., p. 258).

A tragic experience at an early Informal Meet brought this friendly co-operation prominently to view. An Teallach was to be explored, all necessary permission had been got, and arrangements had been made for the accommodation of our party of six (Douglas, King, Munro, Naismith, Rennie, and the writer) at Dundonnell Inn. We arrived in the evening to find that the landlady, Mrs White, had been stricken with a fatal illness, and she passed away within a few minutes of our arrival. Our presence was obviously very inconvenient, but it seemed impossible to find other quarters. At last the head stalker, who with the doctor had joined in the consultation, said that he would take the responsibility of putting the accommodation of Dundonnell Lodge at our disposal, on condition that we would write to the proprietor and the shooting tenant explaining the reason. This was arranged, and Munro, who acted for us in the matter, reported afterwards that he had heard from both to the same effect, "that they were very glad that their representative had acted in their absence as they themselves would have done had they been there." It might be added that while the stalker made no objection to the household staff receiving some acknowledgment of their services, it was with difficulty that he himself was

persuaded to accept as a memento the trivial gift of a pipe.

Apart from its legal aspect, access is a very different matter now. Inglis Clark brought this prominently to the front by writing of "The Motor in Mountaineering." In the pre-motor days the peaks within reach were those which were near the railway, and although a good deal could be done by judicious planning, many districts were practically inaccessible. Nowadays many young climbers either have a car of their own or have friends who own one, not to speak of motor buses to otherwise inaccessible parts of the country. Then there were no Youth Hostels, and for those to whom the cost of hotel accommodation was a consideration expeditions were limited to a day—sometimes a fairly long one. (It might be added that nowadays some, whose example is not quoted for imitation, do their travelling cheaply by begging lifts.)

The Meets, which were first suggested in a letter to the *Journal* (Vol. I., pp. 132-133) by the late Mr D. Mackenzie, are among the most important of the Club's activities, and some might have more than a passing reference. The Yachting Meet is in a class by itself; it deserves and receives an article of its own. Two others are prominent in the writer's memory. One is the first Meet at Fort William (Easter 1895), which the West Highland Railway had just made readily accessible, and which gave several days of glorious weather. It not only included the first ascent of the Castle Ridge and of the North-East Ridge of Aonach Beag but gave us Howie's famous panorama. The other is the Cave Meet, also at Fort William (Easter 1907). The principal Meet had been fixed for Inchnadamph, and the alternative for Arrochar, in spite of the protests of those who thought Arrochar too readily accessible to the Glasgow Spring Holiday crowd. Accordingly the discontented arranged a Meet at Fort William, which someone, remembering the Old Testament story of the Cave of Adullam, dubbed the "Cave" Meet. It was a great success, mustering nearly as many as the chief official Meet, and more than

twice as many as the Arrochar one. Its doings are duly recorded in the *Journal* (Vol. IX., pp. 259-263), and one expression therein is rather startling to those concerned: "Monday saw the old men of the party setting an example to the younger generation by appearing for breakfast at the hour they had ordered it, viz., 5.30 A.M." The "old men" were Goggs, Nelson, and the present writer, and they are now older by thirty-two years!

The first official Meet was in February 1891, but there had been several unofficial ones before then. One of these (Locheearnhead, New Year 1891) was the origin of the "breech-splitting strides" controversy, which for a time threatened to disturb the harmony of the Club. Maylard tells the story in his companion article, but does not tell how, in a speech at the next Dinner, Ramsay convulsed the gathering by his explanation of the difference: "One being merely a layman, could only regard the word breech in its sartorial sense; the medical man took it in its anatomical sense. Hence the difference of opinion."

The Annual Dinners of the Club have always been marked by a high standard of speaking, apart from which there are some with special recollections of their own. Those who were present at the fourth (1892) had the privilege of hearing Sheriff Nicolson not only speak in reply to the toast of "Our Bens and Glens" but also sing his "Song of Skye" (*S.M.C.J.*, Vol. II., p. 107), the privilege being emphasised by the fact that Nicolson died exactly a month later. At the next dinner the toast of "The Alpine Club" was acknowledged by one of the best-known men in the history of mountaineering, Edward Whymper, and many of those present must have been struck by the granite-like face of the famous pioneer. The Coming-of-Age Dinner in 1909 was, of course, a landmark in the Club's history, and was marked by replies on behalf of "The Old Brigade" from Ramsay and Naismith. It was with difficulty that they had been got to take part, one from failing health and the other from diffidence, and the time-table was arranged in the expectation that at the most they would be very brief.

That expectation was not realised, with the result that the proposer of "The Alpine Club" had to be interrupted so that Woolley, the A.C. President, might make a brief reply before hurrying to catch the London train.

The mention of the Dinners recalls two members whom we have recently lost—Fraser Campbell, whose menu cards were always marked by artistic humour, and Rennie, to whom was entrusted for many years the singing of the Club Song, a responsible duty in which he has been worthily succeeded by J. S. M. Jack.

It would be unfair to omit, in writing of the early days of the Club, the name of Colin Phillip. It is doubtful if any man ever possessed such an extensive knowledge of the Scottish mountains as he did, and this knowledge, passed on to the Club sometimes directly and sometimes through Collie, was of great value in directing exploration. His own climbing days were largely past, but his knowledge was always at the disposal of the younger generation.

Although the pleasure of recalling the old Club memories is mixed with sadness, and brings back thoughts of those who have gone, it is difficult to keep its expression within reasonable bounds. The friendships made and severed during these fifty years will never be forgotten, and among those which remain to our declining years there are few so precious as those associated with the Club.

The Club Library, now an asset of very considerable value, had a somewhat casual origin, and its history as regards location and management is practically that of the Club Room. In the early days of the Club, before any independent accommodation was acquired, the present writer had the privilege and pleasure of having his office regarded as its headquarters, and of being himself designated Honorary Librarian. The duties of the post were not interpreted very broadly, and were practically limited to storing whatever was contributed. The first definite suggestion of such contributions, so far as contained in the *Journal* index, was in a letter from Munro (Vol. I., p. 43) suggesting that members should each acquire, and leave in the custody of the

Honorary Librarian, a map on which their various expeditions were indicated, so that other members interested in some particular area could see by reference to these maps which of their fellow-members was in a position to supply information from personal experience. The suggestion does not appear to have been acted on to any great extent, but it was followed by the acquisition of a set of the 1-inch O.S. maps of Scotland, by gifts of books, photographs, and lantern slides, and by the exchange of publications with other bodies, the Alpine Club among others thus contributing its *Journal*. By this means the Club's possessions increased to a substantial extent even in its early days.

This informal arrangement of Club Room and Library continued until 1900, by which time conditions had somewhat changed. The Club's position was well established, its membership had grown largely, and there was a diffidence among many about calling at this informal Club Room. The Honorary Librarian had moved into more commodious quarters, and it was agreed that a small room there should be specifically designated as that of the Club, and that to remove any reason for diffidence a payment should be made therefor. This arrangement was duly carried into effect, but it did not last long, as other considerations emerged almost immediately which led to a more drastic change in the following year.

The Club having originated in Glasgow, it was natural that its early membership should consist largely of those to whom that was the most convenient centre. As the Club grew and spread that preponderance gradually diminished, and it seemed fitting that the headquarters of a Scottish Club should be in the Capital. At the Annual Meeting in Glasgow on 6th December 1901 it was decided to make the change, and a small Sub-Committee was appointed to arrange the transfer, and was authorised to spend a sum not exceeding £100 on furnishing and equipping a suitable room in Edinburgh. This included the transfer of the Library, which by this time, by gift and purchase, had reached very substantial

dimensions. The Edinburgh Club Room, in Dowell's Rooms at first, was formally opened by the first Secretary and then President, A. E. Maylard, on 3rd March 1902.

The offices of Librarian and Secretary, which had for a time been combined, were again separated and taken over respectively by two very active members, whose loss we mention with deep regret—Lawson and Inglis Clark.

Goggs, in his seven-year term of office, was instrumental in adding considerably to the number of books, obtaining new bookcases, and preparing a printed catalogue in 1907. The subsequent history of the Library and Club Room is given in a brief note below.

Note on the S.M.C. Club Rooms.

At the end of 1909 the Club Rooms were moved from Dowell's Rooms to the top flat in No. 12 Castle Street. This flat is on the opposite side of the street from Messrs Douglas & Foulis and so was convenient for Mr William Douglas, who was the editor for so many years. The flat was self-contained, with a caretaker. Besides the Library there was a small room for storage of plans, maps, etc. The main Club Room was formed by removing a partition, and ran from the back of the building to the front, and undoubtedly these Club Rooms were the best the Club has had. There was a warmth and comfort which the Club Room has never attained since then.

In 1929 George Sang purchased the block, 3 Forbes Street, and as there were some rooms to let it was arranged that the Club would take the large room on the ground floor. In theory it was an excellent move which the Club made in May 1929, but the rooms never became popular. It was a large plain room and never seemed to acquire the same atmosphere as the Castle Street rooms. In May 1935, after George Sang's death, the rooms were moved to the second flat in the Synod Hall, where they are at present. This has the advantage of being in close touch with the Royal Scottish Geographical Society, and the Society's room can be used on special

occasions. Although these rooms are not ideal they are not expensive, and are more popular and convenient than those in Forres Street, and more use is being made of them.

A. HARRISON.

III.—The First Official Meet—Crook Inn— 27th February 1891.

By Professor Thomas H. Bryce.

I REMEMBER that first Meet of the Scottish Mountaineering Club, in which I took part as a guest, quite well, but nothing very startling or interesting happened. I was staying with Professor Veitch at "The Loaning." We drove up to the Crook Inn on the Friday afternoon, the day before the climb, and there met the President, G. G. Ramsay, from Glasgow. I cannot recollect who the others were,* but the party was quite a small one. Three other members arrived on the evening of Saturday, but we had departed by then.

Veitch and Ramsay were good friends and good comrades, and the evening at the Inn was a pleasant one and went off gaily. Ramsay, accustomed to the Highland mountains, had rather a contempt for the green rounded heights of Veitch's beloved border hills. Not on this occasion, but on an earlier visit to Veitch, Ramsay came with rather light boots, which he declared would stand up to anything he would meet on a climb with his friend. Veitch scoffed at what he called Ramsay's "Piccadilly Pumps," and prophesied that there would be little left of them before they returned. In a spirit of mischief Veitch chose a rather rocky screey climb, and sure enough the boots were in a bad way before they got back to dinner. The relation between the two men was

* Along with Professor Bryce were Professors Ramsay and Veitch and Mr Hugh Smith. The later arrivals were Douglas, Munro, and Stott (*Journal*, Vol. I., p. 236).

a happy one, and I remember—but, alas, only in a general way—the clash of wit between them, and how story capped story as the evening went on.

Next morning we started for the top of Broad Law after breakfast—duly provided with meat and drink—and Veitch was our guide. Crossing the river, we made the ascent up the shoulder to the westward of Polmood Glen. As we climbed, the day began to break down, and when we reached the summit we were in a thick, cold mist and could only imagine the view described for us in poetical oratory by our guide; the distant Highland Bens away in the north; the Cheviots, blue in the south and east; the Lowther Hills to south and west; and nearer hand, over against us on the south, Molls Cleuch Dod, Lochcraig Head, with the sheer precipice overhanging Loch Skeen and the White Comb, conducting the eye over Hart Fell away to distant Merrick—our own mountain's rival for first place in border altitudes.

The top of Broad Law is so wide and flat that in the mist one seemed to be on a level moor, grass-grown with a peat hag here and there. We crept over it, our guide warning us of the only danger, but a real one, the precipice known as Polmood Crag. A slight fall in the ground told us we were off the summit and soon we were descending one of those charming border burn-heads—the tiny stream falling in steps into crystal pools almost hidden by overgrowing grass and tufts of heather bush. I ventured to suggest that the burn was more like a Meggat burn than one making for Tweed, and so it proved to be. Coming, in the mist, off the south side of the summit, though we had missed the danger of Polmood Crag, we struck the Meggat well on its way to St Mary's Loch, and had a long walk before us back to our starting-point. As it happened, the sky had cleared and the mist had gone when we got down, and it was a pleasant and stirring walk over the pass at Talla Linns and down the glen, now water-filled for the need of Edinburgh, but then a marshy, peaty valley. The stream, spreading widely here and there into shallow pools—called the

Talla Lakes—at last reached the lip of the glen to fall more quickly to the level of Tweed. The reservoir has restored quite happily the old glacier loch to the valley.

No thrills—no view—that is the story of a day, disappointing from a mountaineering point of view, but it was the first official Meet of the S.M.C.

IV.—The Alpine Club and the S.M.C.

By Godfrey A. Solly.

THE Alpine Club was about thirty-two years of age when the S.M.C. was formed, and the friendly feeling of the former was at once proved when a number of the most prominent of its active members, including Clinton Dent, Charles and Lawrence Pilkington, F. Schuster, Horace Walker, and others, proved their goodwill by becoming original members. Charles Pilkington was present at the first two Annual Meetings, and in his speech at the first Dinner spoke of “the hearty interest which members of the Alpine Club took in the formation of the Scottish institution, and their sympathy and fellow-feeling towards it.” He said he was sure numerous members of the senior Club would be desirous of joining the junior one. In addition there is a short note in the *Alpine Journal*, Vol. XV., p. 79, mentioning the first S.M.C. meeting and Dinner, and the intention to start a small journal on the lines of the *Alpine Journal*.

The list of one hundred original members mentions only six Alpine Club members who were resident in Scotland, viz., F. C. Hartley, A. B. M'Grigor, Colin Phillip, G. G. Ramsay, J. Rolland, and George Adam Smith. There should have been one more, as R. A. Robertson, who is not marked as an A.C. member, was elected to that Club in December 1887. However, as he has survived for all these fifty years he has probably forgiven and forgotten the error. The list contains the names of seven members who were subsequently elected

to the A.C., viz., our three founders,* Maylard, Naismith, and G. Thomson, together with Colin Campbell, W. P. Ker, W. R. Lester, and Hugh Munro. I end this paragraph by mentioning that fifteen or more Alpine Club members applied for admission and were elected to the S.M.C., and that no fewer than fifty, including such famous climbers as Collie, Ling, Maclay, and Raeburn, have passed on from the Scottish to the English Club.

Apart from all these statistics there was an influence that unconsciously spread itself through the two clubs and has continued in existence up to the present time. One has to realise that until 1888 the Alpine Club was the only mountaineering club in the British Empire, for the Cairngorm Club, which had then recently been formed at Aberdeen, and has now become a strong climbing club, was little more than a hill-walking association without requiring any substantial qualification for membership until a much later date.

Pilkington in Skye and Naismith in the Highlands with their friends had made some very difficult climbs, and there had been occasional parties of climbers in Wales and in the Lake District, where Haskett Smith had climbed Napes Needle and Scafell Pinnacle, but until the S.M.C. began to hold its Meets at New Year and Easter there were few if any organised meetings open to all climbers. At Easter 1894 Collie asked Joseph Collier and myself to join him in the Highlands. We met after a night journey at Tyndrum, and on our walk up to Inveroran, Collie, who was a member of the S.M.C., told us that we should meet a number of fellows there who were going to the hills, but not doing much climbing (I forget his exact words). That was the first time I ever heard of the existence of the Club which has since meant so much to me. We met there the President, G. G. Ramsay, and others who became lifelong friends.

* Compare this number, p. 8 line 24, statement by A. *E. Maylard, to the effect that Naismith was the single founder of the Club.

We had some good climbs and finished at Fort William; Naismith, Maclay, Thomson, and others were climbing, while the remainder were ascending easier hills and glissading in the deep snow.

I was not at the 1895 Meet, but in 1896 I organised a very strong party of eight members of the Alpine Club to attend the Meet at Fort William, then accessible by train. The names are worth recording—Bowen, Collie, Collier, H. B. Dixon, Hastings, Haskett-Smith, and Slingsby—and we enjoyed some first-rate expeditions. From that time there can hardly have been a Meet of the Club without the presence of members of the Alpine Club resident in England.

Any attempt to estimate the benefits obtained by the two clubs from their intercourse would be difficult and undesirable. The younger club followed the elder by adopting as a model its Constitution, its rules, the mode of election of officers, and a little later its journal; much was certainly gained from the experience of the older climbers, from their wider knowledge of mountains and of the use of ropes and ice-axes upon ice and hard snow. What is even more important, as far as an English member can judge, is that this association helped to give the Scottish club in its own country the position and standing which it has never lost, and after fifty years is likely to retain for all time.

The older Club had grown from a very small beginning in 1857 and was gradually changing. At first it was largely composed of university men and others who could spare time and money for a long holiday, and each member knew most of the others personally or by repute. Many of the earlier meetings were held in the rooms of the Hon. Secretary until the Club was able to move to the two small rooms in St Martin's Place, Trafalgar Square, where it remained until about 1896. Until the date of the Matterhorn accident in 1865 the Club was not very well known, but after that it steadily grew and its scope extended. Before 1890 exploring expeditions had been made to most of the mountain regions in the world, and it was well that the outlook should be widened.

Thus the Club became recognised as a leader and teacher, and the authority upon mountaineering in general. Then came the younger club, bringing in before long a contingent of keen climbers, the forerunners of many from other clubs that sprang up all over the British Dominions and in other countries, and which still look to the Alpine Club as their "mother." Just as the growth of a family will keep alert the character and sympathies of the mother, so I suggest that the Alpine Club, by its association with the younger clubs, obtained a wider outlook, enabling it to deal with new opportunities that offered and new problems that arose, and that the Scottish Mountaineering Club as the first of the new clubs has been able, perhaps unconsciously, to make some return to the Alpine Club for all the help given and the sympathy shown to it in 1889 and the next few years.

V.—The 1897 Meet on "S.S. Erne."

By Walter Barrow.

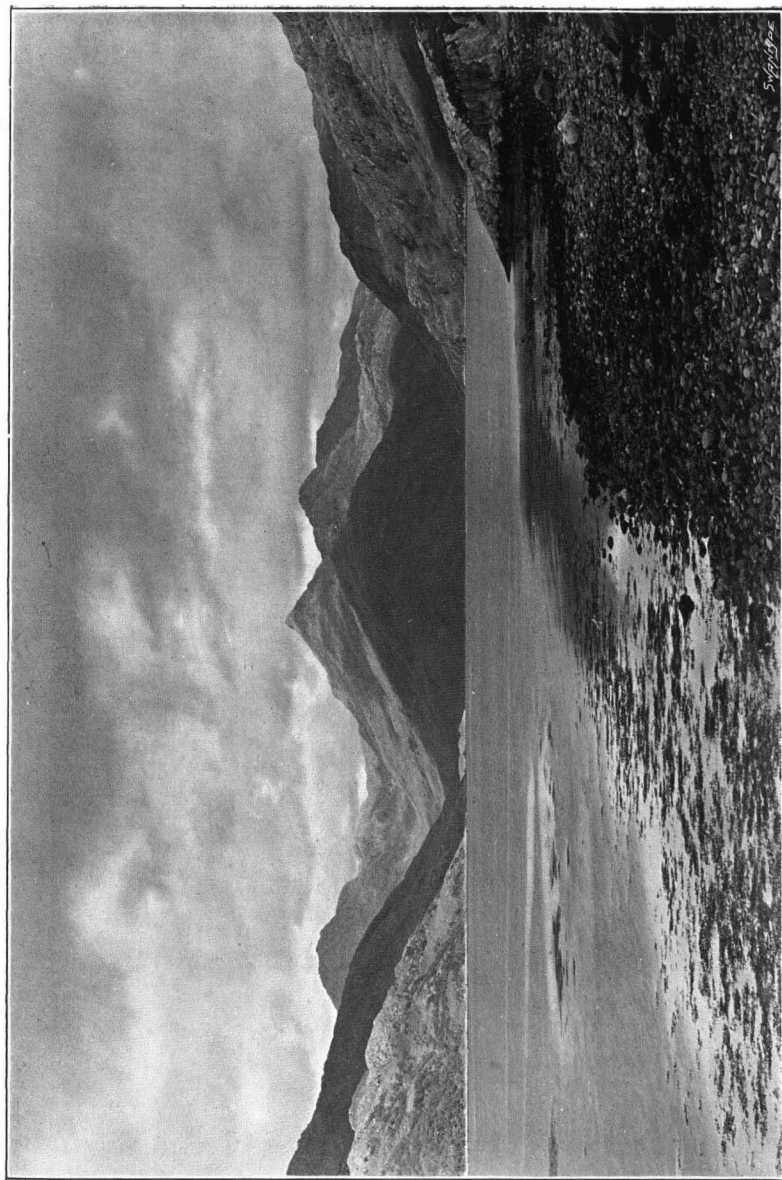
OF the twenty members of the Club and their nine guests (most of whom joined later) who took part in the April Meet of 1897, those who still survive will ever cherish that expedition as one of the unforgettable experiences of their lives. The programme was most attractive in theory, but it broke down in practice owing to the violent weather. Skye in those days was getting known as the most attractive centre for rock climbing in the British Isles. But the chief objection to it was the distance of the Black Cuillin from Sligachan, which was then the nearest place at which accommodation could be obtained. Why not therefore charter a comfortable steam yacht, anchor her in Loch Scavaig, and let the members climb the Cuillin adjoining Coruisk in the daytime and return at night to their comfortable berths and meals on their floating hotel?

This idea commended itself to the Committee of the

S.M.C., and accordingly, on Good Friday, 16th April 1897, the "S.S. Erne" steamed into Loch Scavaig and dropped her anchor. She had picked up her passengers at Oban the previous evening. They included my brother, Harrison, and myself, who had paid a most successful visit to the Cuillin in July 1892, camping most of our time in Glen Brittle under canvas and in perfect weather. The yacht had had a stormy passage round Ardnamurchan Point and across the open water between Rum and Skye. A south-westerly gale was blowing into Loch Scavaig, the anchor was holding none too well, and it was obvious that even if the yacht could lie there it would be impracticable to land; so, much to the relief of those members whose green faces betokened inward travail of the stomach, the anchor was raised and the yacht found shelter in Loch Scresort under the hills of Rum. Some of us went ashore at once, about 2.30 in the afternoon, and climbed Allival and Askival, two mountains of sound gabbro rock.

After dinner that evening an animated discussion took place between those who had been already sea-sick and didn't want to be ill again and those who were resolved at any cost to set foot on Skye. Eventually, on the suggestion of the President, H. T. Munro, it was decided to run across to Loch Hourn as, if the weather improved, it would not be far to return to Skye. But to cut a long story short, we never got back to Skye. Instead, we had a very interesting but stormy time investigating the recesses of lochs Nevis and Hourn (Heaven and Hell) and climbing a number of the surrounding mountains. One of the most memorable feats was the ascent of Sgor na Ciche by H. C. Boyd and my brother Harrison, and their race against time to return to the "S.S. Erne," at Inverie, on Loch Nevis, before 6 P.M., when she was due to leave for Oban. Some of us landed at Eigg and climbed the Scur, which is not often visited. We must have got near a kestrel's nest, for one of these hawks flew round our heads screaming as we neared the top of the rock.

Our return voyage to Oban on the evening of that



Swyngedee

August 1914

THE HEAD OF LOCH NEVIS

A. E. Robertson



September 1931

RUM FROM RHUDUNAN

W. L. Coats

Easter Monday was memorable for one of the most glorious sunsets I have seen on the West Coast. The black peaks of Rum stood out against a rich golden light reflected in the glassy surface of a rolling swell. And on the deck of the yacht, members of the Club, headed by the President in Highland kilt and sporran, danced reel and strathspey to the drone of the Scottish pipes!

At this Meet I had my first introduction to Ling. It was probably the first Club Meet he attended and the beginning of his great record of eighty meets up to the present time. We shall all hope that he will make it a century before he has finished! He was there as a guest of Raeburn, his comrade in that famous mountaineering partnership. Raeburn was one of a party which, on that occasion, did do some real rock climbing in the great gully of Ladhar Bheinn.* I have been looking through the list of present members of the Club to revive my recollections of the few persons at the "S.S. Erne" Meet who are still alive and members of the Club. I particularly remember R. A. Robertson, with his burly form and deep rolling voice, A. E. Maylard, and T. H. Smith of Broughty Ferry, with whom I went several expeditions. And I must not omit my energetic brother Harrison. He returned to Skye the following year to camp on the shores of Coruisk with other members of the Club. For the first six days of their camp it never ceased raining in torrents. He eventually came back home with rheumatism, which he only got rid of by a course of baths at Droitwich.

* See *S.M.C.J.*, Vol. IV., p. 299, or "The Western Highlands Guide," p. 53.

"AN CAISTEAL" 3,265 FEET.

By T. Fraser S. Campbell.

(Ascended 4th January 1914.)

*A Greeting addressed to Professor Ramsay, First President
of the Scottish Mountaineering Club.*

[NOTE.—On 4th January 1914 with a party of S.M.C. members I climbed "An Caisteal" (in bad weather), this being the first "new ascent" I had made since Easter 1894, when I climbed Ben an Dothaidh with Professor Ramsay, his son, and C. C. B. Moss.]

To you, first Chieftain of our Club,
A kindly greeting from your "bairns,"
Gathered within this friendly "pub,"
To seek the circumjacent cairns.

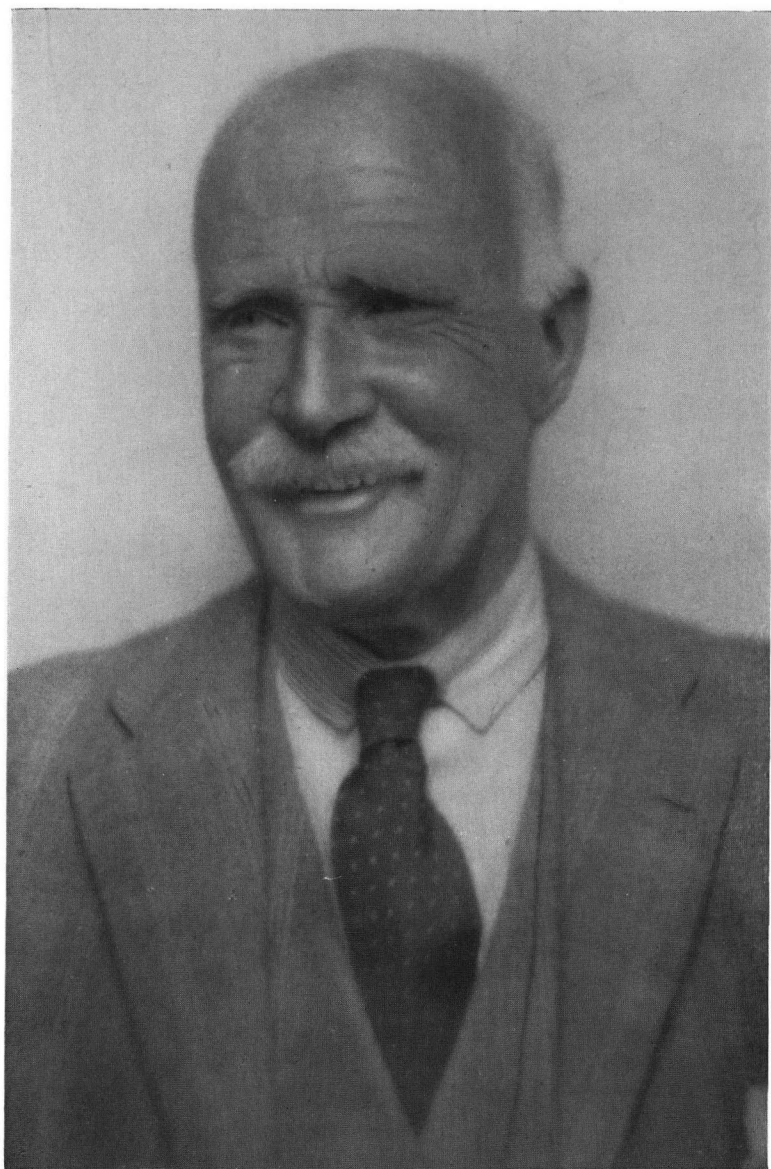
'Tis twenty years since you and I
Have trod the Highland hills together,
Glad faces turned toward the sky
In summer shine or wintry weather.

The hills still stand in grim array,
Their white cloaks drawn about their shoulders:
Black rocks against a sky of grey,
And sloping flanks bestrewn with boulders.

And though my limbs are not the same
As once they were—within me burning
My spirit bids me play the game
And scorn the very thought of turning.

So from "An Caisteal's" ridge of snow,
Where it is blowing, freezing, sleeting,
Remembering days of long ago—
Remembering you—and "Ben an Dothaidh"—
I send you greeting.

CRIANLARICH HOTEL,
4th January 1914.



JOSEPH GIBSON STOTT
The Founder of the *Journal*

THE "JOURNAL."

By F. S. Goggs.

To talk of affection, when speaking of an inanimate object, is to lay oneself open to attack by the purist, but to an *ex*-editor, fondly handling the volumes for which he was responsible, the use of the term may, I trust, be forgiven—and that is the position of the writer.

Speaking for the older members of the Club, I have no fear of being contradicted when I say that the *Journal* has always been looked upon by us with affectionate regard, and I doubt not but that the same feeling exists among the generation of to-day.

What is the reason that our *S.M.C. Journal* occupies this exceptional position? Doubtless many could be given, but I would submit that the main one is the fact that its foundations were well and truly laid by our first two editors—Stott and Douglas.

It was an unkind stroke of fate which caused Stott to miss the Club's Jubilee by a beggarly six months, but owing to the forethought of our present editor, who wrote him in January 1938, a contribution from Stott follows:—

MELBOURNE,
February 1938.

" . . . I well remember that afternoon in Glasgow when half a dozen of us debated the pros and cons of a Journal. There was a good deal of opposition, the main reason advanced being that Scotland was too small to provide material for more than a few numbers. I strongly objected, and for the first time (I believe) ventured my belief that there were not less than 300 mountains in Scotland whose height exceeded 3,000 feet.

" Well, they gave me the *Journal*: and its life of nigh half a century, and still going strong, proves the truth of all that I claimed for it. Read my preface

to the first number. If you want a message from me why not reprint that preface? Many of our members can never have seen it. . . .”

Stott's preface is too long for reproduction in full, but his concluding paragraph reads as follows:—

“ Enough has been said to let it be seen that there are many sources from whence to draw a steady supply of matter sufficient to support our literary effort for a long time to come. And if, sooner or later, it is thought advisable to discontinue, at any rate it may be hoped that we shall have supplied a want long felt in the shape of reliable description of much of the wilder and more picturesque part of our country; that our pages will hold the record of many pleasant friendships formed and fostered; that their perusal will inculcate a love of our manly pursuit in persons who might not otherwise be drawn towards it; and last, but by no means least, that they will remind us of many an agreeable expedition amid scenes wherein, more truly than in other spots, we may say that—

“ Our life, exempt from public haunt,
Finds tongues in trees, books in the running brooks,
Sermons in stones, and good in everything.”

In *Journal* No. 1 we have to thank Stott for preserving for all time the inimitable address given at the first Annual Dinner of the Club on the 12th December 1889, by our first President, Professor Ramsay. In *Journal* No. 6 appeared the historic “ Tables giving all the Scottish Mountains exceeding 3,000 feet in height,” by Munro. In connection with this item Stott calls himself a “ taskmaster ” (Vol. I., p. 314), and credit is undoubtedly due to him for so successfully keeping Munro's nose to the grindstone. *Journal* No. 7 opens with Stott's valediction on his departure for New Zealand: he mentioned that in future the *Journal* would appear twice a year instead of thrice.

William Douglas, editor number two, now appears on the scene. He evidently scorned a retreat to twice a year, and throughout his long editorship of eighteen years

(1892-1909) the output of three a year was maintained. In fact, it was not till 1918 that the limitation to two a year was put into force and the price to the public raised from 1s. to 1s. 6d. It was raised to 2s. 6d. in 1921. The Club's debt to Stott was increased in Douglas's first issue by the inclusion therein of the "Club Song" (Vol. II., p. 69, verses 1-3; Vol. III., p. 46, verses 4-6).

As regards Douglas, I cannot do better than quote from Rennie's appreciation of him (Vol. XI., p. 1): "A bookman by profession, he has given his knowledge of bookmaking technique freely to the Club: enthusiastic for the hills and for all that belongs to them, painstaking in collecting information and knocking it into shape, a photographer and an expert writer." Douglas found the *Journal* a stalwart infant, nursed it through its troubles to maturity, and left it with a character formed for life.

As the Club progressed in age and numbers, hill walking naturally developed into mountaineering in its two departments of snow and rock, and Douglas, a lover of the mountains, equally sympathetic to the salvationist and the ultramontane, saw to it that the *Journal* was representative of all sections. In this connection it is interesting to note that the rope and axes first appeared on the cover of the *Journal* in January 1898 (No. 25), and there they have continued until this day.

Douglas put through the *Journal* the "S.M.C. Guide Book," the precursor of the elaborate Guide Books which have since appeared. It was started in No. 34, January 1901, and ran on to No. 57, September 1908. He himself was responsible for the "Isle of Skye," which occupied one complete number—54, September 1907. This number taken in conjunction with an article by him in No. 29, May 1899, entitled "Early Descriptions of Skye" (A.D. 1549 onwards), shows Douglas in his threefold capacity as a scholar, a bookman, and a mountaineer.

Before giving up the editorship, Douglas permitted me to devil for him in respect of two or three issues. He was very particular about the correct spelling of Gaelic hill names, and I spent so many hours checking them off

with the 1-inch O.S. map (the standard adopted) that to-day, twenty years after my responsibility for the *Journal* has ceased, my eye will automatically catch any incorrect spelling of a Scottish hill. Three other points were impressed on me—(1) Bring the number out punctually. (2) Accept no articles on climbs abroad. (3) Bar poetry. Later editors have somewhat relaxed point (3); even I must plead guilty to having admitted the Oxford Professor of Poetry.

Being of a conservative and placid disposition I, an amateur, was content on my accession to the editorial chair to follow the lines laid down by the expert and to do my best to maintain the *Journal* at the high level to which Douglas had brought it. Backed up by the members, I found, apart from the continuous effort, no special difficulty in bringing out three numbers a year till the war came in 1914. That year coincided with my removal to London. As I consider that the Editor should be in close touch with all branches of the Club's activities and that his residence furth of Scotland automatically renders this impossible, I wished to resign, but as all our younger and active members were immersed in war duties, the Committee said I must just carry on. With the help of the older members I kept the home fires burning till October 1920, when my last number (90) was issued. If length of days be an unmixed blessing, the Club must be counted fortunate in having only three editors over a period of thirty-one years—in the next fifteen it had five.

E. P. Buchanan, of a younger generation, put in good work for four years, and was succeeded by G. B. Green, an old Oxford running "blue" and senior classical master at the Edinburgh Academy for thirty-three years. A lover of the hills, his editorship gave him much pleasure and the Club satisfaction. He was only responsible for five numbers, and his sudden death in June 1927 necessitated George Sang, the Club's Honorary Secretary, stepping into the breach and producing No. 104, November 1927. The editorial chair was then graced for five years by a Paisley man, J. MacRobert, who did his work with the thoroughness one anticipates from a member of the

legal profession. Thus owing to Green's death Vol. XVIII. had the names of three editors on its title-page—a unique experience for the Club. In 1933 the penultimate editor, C. W. Parry, came on the scene. He produced six interesting numbers, but as he lived in Surrey he found that he could not keep in that close touch with the Club's activities which is essential, so in 1936 he handed over his office to J. H. B. Bell, D.Sc.—a Fifer, though now resident in Clackmannan. His enthusiasm for the hills, his comparative youth, a fine climbing record, and the six numbers he has already issued give the Club sound reasons for wishing that he will substantially lengthen the somewhat meagre mean of the editorial term of office since 1921.

Schedule of Editors.

Name.	First Number Issued.	Last Number Issued.	Numbers Produced.
J. G. Stott	Jan. 1890, No. 1	Jan. 1892, No. 7	7
W. Douglas	May 1892, „ 8	Sept. 1909, „ 60	53
F. S. Goggs	Feb. 1910, „ 61	Oct. 1920, „ 90	30
E. P. Buchanan	Apr. 1921, „ 91	Nov. 1924, „ 98	8
G. B. Green	„ 1925, „ 99	Apr. 1927, „ 103	5
G. Sang	Nov. 1927, „ 104	1
J. MacRobert	Apr 1928, „ 105	Nov. 1932, „ 114	10
C. W. Parry	„ 1933, „ 115	„ 1935, „ 120	6
J. H. B. Bell	„ 1936, „ 121		

Editors may come and go, but the printers seem to last for ever. The same firm, The Edinburgh Co-operative Printing Company Limited, or more shortly, The Darien Press, have been responsible for the printing of the *Journal* from its inception right down to date, and members will, I am sure, agree that it is fitting that their good work should have a word of acknowledgment in this Jubilee number.

Illustrations.

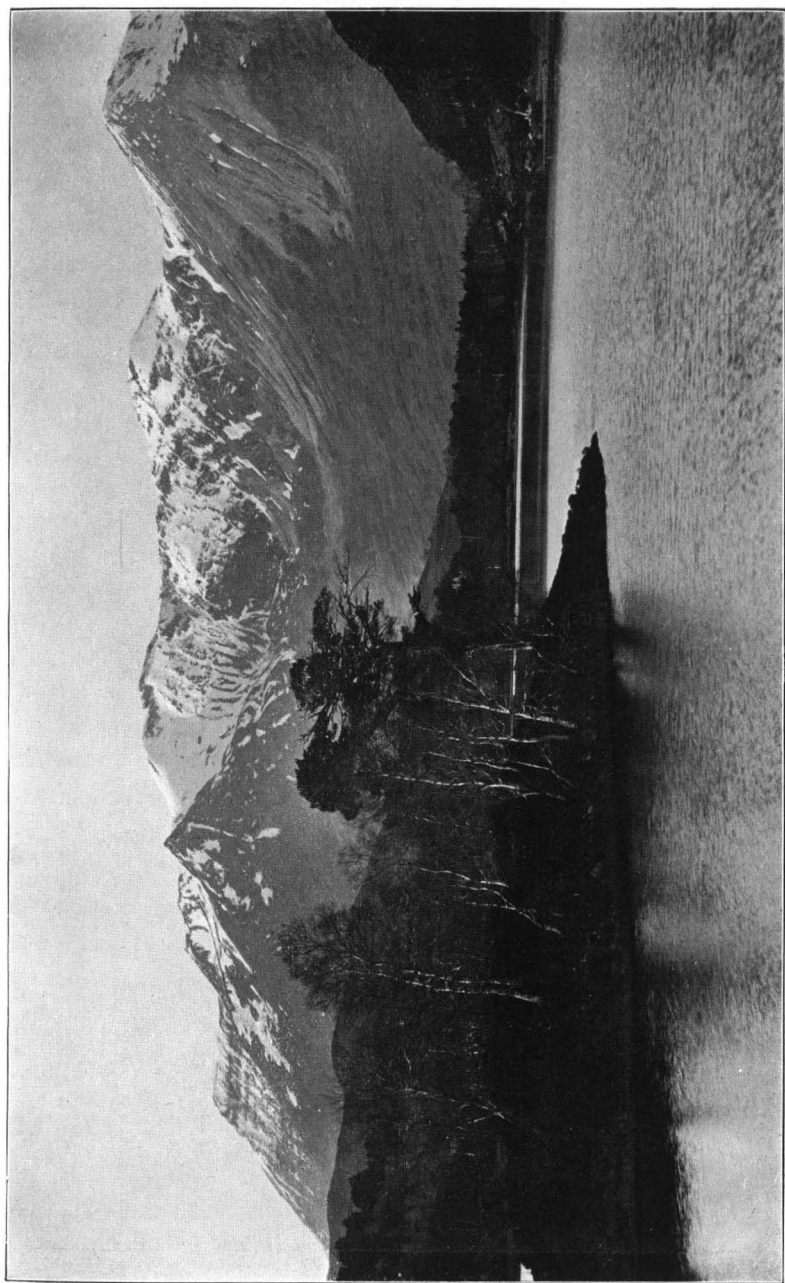
All members will agree that one of the *Journal's* main attractions has been its illustrations. As would naturally be anticipated from the advance of the technique

of photography—lenses, films, etc.—and of the art of reproduction, the plates appearing in the *Journal* show consistent progress. The Club, too, has always been fortunate in having in its ranks not only good technical photographers, but first-class artists behind the lens. The first expert to be mentioned is W. Lamond Howie, who wrote an interesting article on "Mountain Photography" in the May 1893 *Journal* (Vol. III., pp. 249-253), and in the September 1895 *Journal* (Vol. III., p. 316) appeared his well-known "Panorama of Ben Nevis from Carn Mor Dearg." Another very fine panorama of his, little known, I fear, is that of "An Teallach," in Vol. XI., p. 164, October 1910. From 1895 till his death in 1918 a number of his photographs were reproduced in the pages of the *Journal*. "His originality of ideas and methods were distinctively exemplified in the judgment and skill with which he 'composed' his pictures of landscape scenery" (In Memoriam article, Vol. XV., p. 159).

Next comes Dr W. Inglis Clark, whose first photograph in the *Journal*, "Blaven in the Clouds," appeared as the frontispiece to No. 27, September 1898. In the same number an article by him, "The Mountaineer as a Searcher after the Beautiful" (pp. 121-125), is illustrated by three superb photos of Howie's. For the next twenty years many specimens of Dr Clark's skill gave pleasure to the Club.

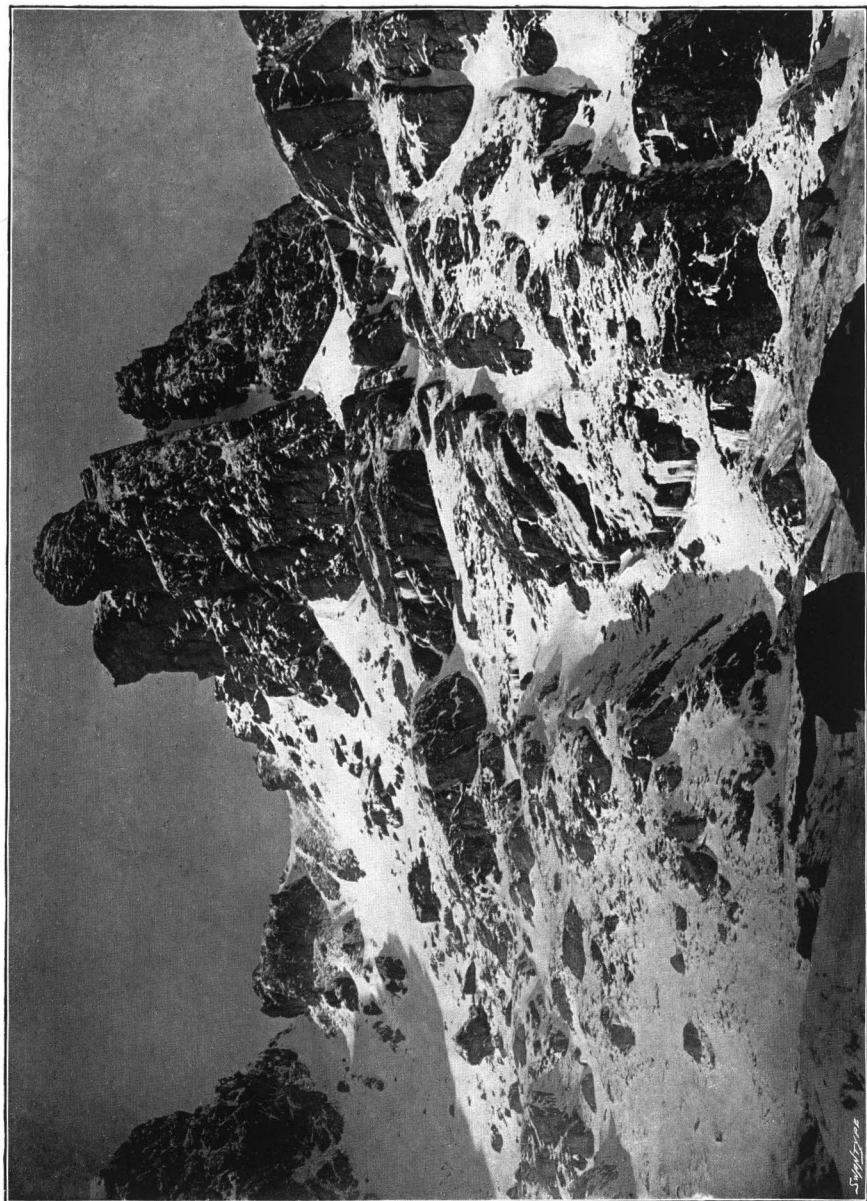
Third in order of date is A. E. Robertson, who in length of time and number of contributions easily heads the list of the Club's photographers: his first appearance was in Vol. VII. (September 1903, p. 305), "Sgurr Dearg from Sgurr Alasdair." Curiously enough, four pages before appears a fine photo by Lamond Howie, and five pages after, one by Inglis Clark—so here we have a Meet of these three prominent photographers. A. E. R.'s last appearance was in Vol. XXI., p. 322, April 1938, "The East End of Loch Affric"; for thirty-five years his charming scenes of Scotland have delighted us, and, like *Oliver Twist*, we ask for more.

Three other names may be mentioned in the middle period and two in more modern times. Howard Priest-



W. Lamond Howie

BEINN EIGHE FROM LOCH COULIN



W. Inglis Clark

NORTH PEAK OF THE COBBLER FROM THE SOUTH

Sept 1900

man, a Yorkshireman and a great lover of Skye, was in the front rank of photographers—see, for example, "The Sligachan Burn in Spate," Vol. XVI., p. 99. He used his art for photographic triangulation, and the "Skye Guide" is indebted to him for a contour map of the Cuillin. Our old comrade, J. R. Young, whose death in 1920 was a loss to the Club in many directions, was another fine photographer. Nearly all the Guide Books contain outstanding specimens of his work. Then there is J. H. Buchanan, whose work appeared frequently in the pages of the *Journal* until a few years ago as well as in the Guide Books. Perhaps his illustrations of the scenery of the Cairngorms are most characteristic.

Percy Donald, whose sudden death last year was a shock to his fellow-members, was another expert: he rewrote the article on "Photography" in the new edition of the "General Guide," and had contributed many first-rate photographs to our *Journal* and Guide Books. So many members have contributed to our illustrations that I could continue almost indefinitely. I must therefore confine myself to one more—Hugh Gardner. He is carrying on our line of artist photographers, and we look forward to seeing many more specimens of his skill. One or two of our young men are also showing great promise. The twenty-one volumes of the *Journal* supply an unparalleled picture gallery of the bens and the glens of bonnie Scotland—they are an unfailing delight to us all, and not least to the climber whose active days are over.

Inter Alia.

It would be interesting to trace from the pages of the *Journal* the development of hill-walking into mountaineering, but I understand that this aspect will be dealt with in a separate article.

The influence of the motor car on our sport in Scotland is another subject of interest, which is referred to elsewhere in this number, and I will content myself with calling the attention of readers to the fact that, so long ago

as 1903, Dr Inglis Clark wrote an article in the *Journal* on "The Motor in Mountaineering" (Vol. VII.). May I venture to hazard the opinion that petrol has not been an unmixed blessing to the mountain lover. Speed and noise are the antitheses to

"The silence that is in the starry sky,
The sleep that is among the lonely hills."

As, owing largely to the use of the car, early starts are much less frequent now than they were a generation ago, I have culled a few instances from the older *Journals*.

"*Inveroran Meet, April 1892.*—Naismith and Gilbert Thomson left Glasgow by the night train, and at 3.30 A.M. started from Dalwhinnie. The summit of Ben Alder was reached at 8.25 A.M., Gortan at 5 P.M., and Inveroran at 8 P.M." (Vol. II., pp. 124-125.) There were giants in those days!

Beaully to Strath Carron.—In Vol. III. (p. 122) another 3.30 A.M. start, this time from the "Lovat Arms," Beaully, after a "solid and elaborate" breakfast at 3 A.M. Strath Carron Station Hotel was reached the same evening—a trap and a carriage and pair assisted in the good work. Hinxman, Rennie, Douglas, and Colin Phillip were the culprits.

In February 1909 four members left Dalnaspidal at 3 A.M., having travelled up by the 9.45 P.M. train ex Glasgow. (Vol. X., p. 247.)

Fort William, Easter 1909.—"On Friday morning, breakfast at 6 A.M. was the rule." (Vol. X., p. 337.)

Index.

One cannot conclude an article on the *Journal* without mentioning the very full Index (288 pages) compiled by William Garden and James A. Parker in 1911; it covers the first ten volumes (1890-1909) and is divided into five sections. I understand that an Index for Vols. XI. to XX. inclusive is in course of preparation by R. M. Gall Inglis. Though on a less ambitious scale, it will be very welcome.

PAN.

By the Rt. Hon. Lord Tweedsmuir, G.C.M.G., C.H.

WE do not hear so much to-day of the goat-foot god. When in the nineties I first became interested in literature, Pan was a familiar part of the stock-in-trade of the bellettrist, both essayists and poets; now he seems to have dropped out of the fashionable mythology. But the experience which was the basis of the myth does not go unrecorded. In wild places or in wild weather, men are still awed by a sense of the immensity and pitilessness of Nature. There is a *Natura maligna* as well as the Wordsworthian *Natura benigna*, and anyone who sails a boat, or climbs mountains, or traverses swamps and deserts, is at times more conscious of the savagery of the natural world than of its peace. Sometimes, too, there come moments when one feels a kind of personal malevolence, the sense of a hostile will which almost takes bodily form, and which sets the nerves fluttering in despite of the reason. In such moments one sees—or at any rate feels—what the ancients meant by Pan.

I do not know if this fate has befallen any member of the Scottish Mountaineering Club. I can think of places well fitted for it—the recesses of the Dungeon of Buchan in Galloway, or An Teallach in Ross, or the dark hills that huddle behind Cape Wrath, or some desolate *machair* in the Isles. But perhaps a member of the S.M.C. is fortified against Pan by his hob-nails and his ice-axe. The old spirits of the earth have always had an aversion to cold iron.

As a child in Tweeddale I used now and then to get to the edge of this kind of fear. I was a keen angler and was always looking for the unfished head-waters of the burns. So I often found myself in some distant green hope where a shoulder of hill shut out the world. If there were sheep in the hope I was never afraid. But more than once I became suddenly conscious that I was absolutely alone in an enclosed place, without the company of bird or beast. Then the terror of such solitude

laid hold of me, and I fled incontinent, until I came in sight of a herd's cottage.

That is an experience which many children have known, and its basis was the dread, not of some malign unseen personality, but of the awesome impersonality of Nature. Once, however, I came very near panic in the strict sense.

It was in the year 1911, when I had long left boyhood behind me. I was spending some weeks in the Bavarian Highlands in the neighbourhood of Partenkirchen, and scrambling among the little peaks of the Wettersteingebirge. It is a beautiful country of hill and forest, and its peasants are, I think, among the handsomest in Europe. But they are queer folk, with many hoar-ancient customs, like their balefires on the Eve of St John. I used to find them delightful, but in the war the men drawn from those parts had a bad name with our troops for savagery.

There is a small rock peak in that neighbourhood called the Alpspitze, which I set out to climb about 2 A.M. one June morning, with, as my companion, a young forester called Sebastian. We duly reached the summit, and about 9 A.M., after breakfast at a little mountain inn, began our walk of six miles or so to the valley. It was a brilliant summer day with a promise of great heat, but our road lay through pleasant shady pine woods and flowery meadows.

I noticed that my companion had fallen silent and, glancing at him, was amazed to see that his face was dead white, that sweat stood in beads on his forehead, and that his eyes were staring ahead as if he were in an agony of fear—as if terror were all around him so that he dared not look one way rather than another. Suddenly he began to run, and I ran too, some power not myself constraining me. Terror had seized me also, but I did not know what I dreaded. It was like the epidemic of giggling which overcomes children who have no wish to laugh. We ran—we ran like demented bacchanals, tearing down the glades, leaping rocks, bursting through thickets, colliding with trees, sometimes colliding with each other, and all the time we never uttered a sound.

At last we fetched up beside the much-frequented highway, where we lay for a time utterly exhausted. For the rest of the road home we did not speak; we did not even dare look at each other.

What was the cause? I suppose it was Panic. Sebastian had seen the goat-foot god, or something of the kind—he was forest-born and therefore near primeval things—and he had made me feel his terror.

I have never had another such experience, but a friend of mine had something like it in Norway. He was alone, climbing in the Jotunheim, and suddenly, in a wild upland glen, terror of space and solitude came upon him. He ran for dear life, crossed a considerable range of mountains, and at last reached a *saeter*. There was no one in the place, but there were cattle, and he found sanctuary in a byre, where he nuzzled his face into the neck of a most astonished cow!

SPRING.

(From the French of Charles d'Orleans.)

“Le Temps a laissé son Manteau.”

The Year has slipped his mantle grey
Wind torn and soiled with frost and rain;
And in a robe of palest blue,
Threaded with sunbeams through and through,
He goeth forth all blithe and gay.
The Year has slipped his mantle grey
Wind torn and soiled with frost and rain;
And beast and bird, on hill and plain
Rejoice that Spring is come again;
And every lake and every stream
With gold and silver jewels gleam.
The Year has slipped his mantle grey
Wind torn and soiled with frost and rain.

T. FRASER S. CAMPBELL.

SALVATIONIST AND ULTRAMONTANE.

“ . . . The Salvationist takes his pick from the list,
And the agile Ultramontane finds the exercise he’s wantin’—”

—*The S.M.C. Song*, by J. G. STOTT.

NO doubt many of our members, as well as members of the Junior Club, have sometimes pondered over the origin and significance of these two words as applied to mountaineers. The Club Song itself was composed by J. G. Stott, the first Editor. The first three verses arrived from his place of exile, New Zealand, in time for the Loch Awe Meet of New Year 1892. The lines quoted above are from the fourth verse, which, along with the rest, was printed in the *Journal* of January 1894. The terms themselves appear to have originated in an article, “Ben y Gloe on Christmas Day,” by Hely H. Almond (*Journal*, Vol. II., p. 235). His dissertation is so humorous and illuminating that we make no apology for including a lengthy quotation.

“Members of the Mountaineering Club may be divided into two classes. There are those whose ambition it is to scale the inaccessible side of peaks with unpronounceable names. . . . I admire these people; I like to dine with them, and hear them talk; for the sake of a name I call them the Ultramontanes. It is delicious and inspiring, in these after-dinner moments, to rise to the faith which is beyond reason, and like various kinds of spirits, above proof, and to murmur *Credo quia impossibile*.

“But let me confess with all due humility and shame, that I have permanently enlisted in the Salvation Army, which is the name I give to the second class of mountaineers. As our name implies, we like to know that we are safe—absolutely safe. We don’t like contusions; we would rather go home to dinner than lie on the ground till people came to set our bones, or carry us off on a stretcher; we have no desire to be the conscious element of an avalanche or a land-slip. And yet, like

Mark Twain on his celebrated ascent of the Riffelberg, we like something of the pomp and circumstance of glorious war—an alpenstock, a bit of rope, blue spectacles—a good deal of noise and fuss about it when we come home again. . . . Now I am going to make a bold assertion—perhaps too bold. I believe the Salvation Army to be in a majority in the Club. . . .”

Doubtless these are ideal types, and many of us indulge in both forms of climbing. Even so, the comprehensive nature of the Club cannot be better exemplified than by the inclusion in this number of a biographical memoir on the leading historical figure as regards each of these two aspects of Scottish mountaineering.

THE EDITOR.

Sir Hugh T. Munro, Bart.

By Jas. A. Parker.

HUGH Munro was an original member of the Club and was, in fact, one of its most enthusiastic promoters. He was one of the strongest personalities in the Club, and probably no one did more for it than he during the first twenty-five years of the Club's existence. It is curious to reflect now that of the present members of the Club 75 per cent. never met him, and to them “Munro” is little more than a mere name for any Scottish Mountain of, or exceeding, 3,000 feet in height.

Munro belonged to Angus where his home was the dower house of Drumleys, and latterly, when he succeeded his father in 1913, the mansion house of Lindertis, about three miles to the west of Kirriemuir. Munro was a member of the first Committee, and served on the Committee until 1915 with only three short breaks, a total in all of nineteen years' service. He was Vice-President in 1893, and President, the third, in 1894-97. He was admitted to the Alpine Club in March 1893, and was a Fellow of the Royal Geographical Society.

Munro is believed to have missed very few of the

Annual Dinners of the Club, and at the first one he replied for "The Lairds." He was a most regular attender at the Meets and would return to Scotland from the most outlandish places in order to attend one. Of the fifty-seven Meets that were held from April 1889 to Easter 1916, Munro attended no fewer than forty-one. From Easter 1895 to January 1913 he missed only three Meets out of a possible of thirty-four. Surely this constitutes a record!

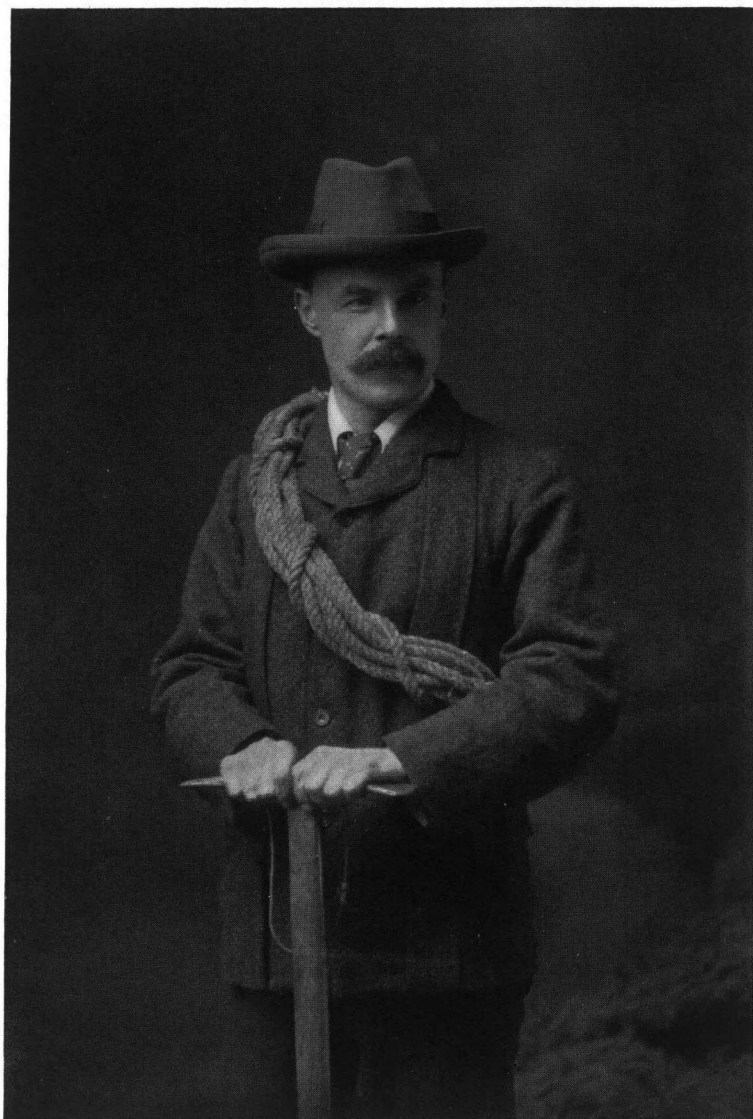
Munro always had the intention that when he succeeded his father there would be a Meet of the Scottish Mountaineering Club at Lindertis. As a matter of fact there were two, the first in January 1915 and the second in the following May. The attendance at each was necessarily small; but it is needless to say that the two Meets were most enjoyable, as Munro was a perfect host. The writer of this note attended the second Meet, and on several occasions was a guest at Drumleys or Lindertis.

Munro was a regular contributor to the *Journal*, and altogether about eighty-four articles or notes by him appeared in the first fifteen volumes. His most important contribution was, of course, his famous "Tables giving all the Scottish Mountains exceeding 3,000 feet in height," which were published in the *Journal* for September 1891, the compilation of which involved a tremendous amount of accurate work. Otherwise his most important articles were "Winter Ascents," "Dark Lochnagar," "Ben-y-Gloe," "The Western Cairngorms," and "An Teallach."

As far as Scottish Mountaineering was concerned Munro had three ambitions, viz.: to be a President of the Club, to hold a Club Meet at Lindertis, and to get to the top of every one of the five hundred and thirty-eight 3,000-foot mountain tops that were mentioned in his Tables. He achieved the first two, but the fates were against him as regards the third. He managed to get to the summits of all the "tops" with the exception of two, these being the Inaccessible Pinnacle in Skye, which beat him many times, and Carn Cloich-mhuillinn in the Cairngorms, which latter he had kept for "the



SIR HUGH T. MUNRO



HAROLD RAEBURN

(About 1905)

last one " as he wished to invite the Aberdeen members to attend the ceremony!

But it was not to be. His last tries at the Pinnacle were made in September 1915. In the spring of 1918 he went to Tarascon with his two daughters and started a canteen there for the French troops. That done he returned home to attend to his estate. He went back to Tarascon in the spring of 1919, caught a chill, and died from pneumonia a month later at the age of sixty-three. His obituary notice by W. Douglas, with a contribution by Miss A. K. Munro, his sister, appeared in the *Journal* for October 1919.

Harold Raeburn.

By W. N. Ling.

AS one looks back over the annals of the Club for the fifty years of its existence which we are now celebrating, certain names stand out prominently of those who have done much pioneer work and have enhanced its prestige as a mountaineering club. Amongst these must be counted the name of Harold Raeburn.

He was not an original member, but joined the Club in 1896, and at once began to pile up a formidable list of explorations and first ascents. Gifted by Nature with a marvellous sense of balance, a wiry frame, and an extraordinary suppleness of limb, he added to these a cool judgment, entire fearlessness, and an indomitable will which refused to be beaten. An intense interest in Nature in all her manifestations, in wild life of birds and beasts, in flowers and plants, in rocks and the structure of mountains, gave him that keenness of observation which at once caught the attention of anyone who had the privilege of being his companion.

This keenness of observation enabled him to discover many of the climbs which have become classic in the history of the Club, and in no selfish spirit did he keep his discoveries to himself, but was always ready to place

his skill and experience at the service of others less gifted than himself. Many a member of the Club will acknowledge the help and education he received from him, and he was always ready to initiate any keen young novice into the mysteries of the mountains.

As examples of some of his work may be cited the following. Several unsuccessful attempts by strong parties had been made on the Church Door Buttress on Bidean nam Bian from 1894 onwards, but it was not until July 1898 that the ascent was finally achieved by a party led by Raeburn, who had to remove his boots before he finally conquered the crucial difficulty.

The Observatory Ridge, Ben Nevis (alone), was another of his pioneer ascents, and indeed the mountain was a great favourite of his, both in winter and summer, as climbs on the North-East Buttress, Castle, North Trident Buttress, and others show. There are very few parts of Scotland where some new route or climb was not discovered by him.

The Barrell Buttress on Quinag was another well worked out job which Mackay has graphically described in his article written after Raeburn's death. There were one or two pitches of great severity, and on the first attempt the party was brought to a halt by a pitch which seemed to block further progress. It was decided to prospect the climb from the top, and this was gained by an easy gully between the buttresses. From here the upper part was descended to about 30 feet above the highest point reached on the first attempt. A rope ring and a doubled rope were used to overcome this part, which was overhanging. Then the rope was pulled down and the pitch tackled in earnest. From the shoulder of the second man—Mackay—Raeburn managed to get over the overhang to a good stance. The second man followed from the third man's shoulder. The third man, who was fortunately the lightest, unable to stand on his own shoulder, had to kick off below the overhang and be hauled up, rather breathless, and the difficulty was overcome. This was typical of Raeburn's unwillingness to accept defeat.

He was a prolific writer in the *Journal*, and in the first ten volumes his name as author appears no less than forty-nine times.

His book, "Mountaineering Art," is a model of what such a work should be, and has doubtless helped many a young mountaineer to grasp the theory and practice of climbing. I remember meeting two young Americans on Monte Rosa, and in the course of conversation asking them what had started them on their climbing career. Their answer was that they had come across Raeburn's book. When I told them that I had been his companion in many a mountain adventure, their interest was almost embarrassing.

His modest accounts of his successes at home and abroad do not give a full picture of his greatness as a climber. I can see him as he fought his way up the east face of Monte Rosa from Macugnaga, up the Zmutt Ridge of the Matterhorn draped in ice, and taking eleven hours from a high bivouac, and the Vierieselgrat of the Dent Blanche, all first British guideless ascents.

I can see him, too, on the seaward face of Slogen in Norway, a climb not repeated for twenty-five years, on the ice-clad cliffs of Tschantschachi Choch, and in a five days' battle with the twin peaks of Ushba, in the Caucasus, where defeat left no bitter feeling, for he had gone to the extreme limit of safety, but no one saw him on his daring, single-handed traverse of the Meije in Dauphiné.

His gallant attempts, too, in the Himalaya, in spite of crippling illness, showed the mettle of the man, and acclaimed him one of the foremost mountaineers of his day. It is right, therefore, that on this anniversary in the history of our Club we should honour his memory for the distinction he brought to the Club, and the shining example he gave to all of us, his contemporaries and followers.

A SHORT HISTORY OF SCOTTISH CLIMBING.**I. Up to the Outbreak of the Great War.****By H. MacRobert.**

IN the early volumes of the *Club Journal* will be found a series of articles under the title of "Rise and Progress of Mountaineering in Scotland." By way of introduction to these articles the Editor, Wm. Douglas, in a note, explained that the intention was to record "the history of our sport in Scotland from its earliest beginnings to the form in which it is now practised by the modern School of Climbers." This object was, in fact, not quite achieved, as all six papers were devoted mainly to extracts from and criticisms of the published accounts of the many distinguished travellers who visited Scotland in the eighteenth and nineteenth centuries. They do show, however, a gradually increasing interest in mountains and wild and desolate scenery, and John Macculloch (1773-1835) claims to "have ascended almost every principal mountain in Scotland"! In spite of this claim and the exploits of Dr Samuel Johnson, Thomas Pennant, and others, the first real Scottish mountaineer was Professor J. D. Forbes. In 1836 Forbes made the first ascent of Sgurr nan Gilleann, and this may be said to have inaugurated Scottish mountaineering. Sheriff Alex. Nicolson carried on the good work, and in 1873 made the first ascents of Sgurr Dearg and Sgurr Alasdair. The only other ascents of outstanding importance prior to the formation of our Club in 1889 were the fine climbs done by the brothers Pilkington, also in Skye, and referred to below.

In an interesting article entitled "A Short History of Lakeland Climbing" which appeared in the *Fell and Rock Climbing Club Journal*, 1936-37, the authors distinguish four main phases in the development of rock-climbing in the English Lake District. These phases are: (a) the Easy Way period up to 1880; (b) the Gully and Chimney period, 1880 to 1900; (c) the Ridge and

Arête period, 1890 to 1905; and (d) the Slab and Wall period, 1905 to date. In the Lake District only one branch of mountaineering has been developed, namely rock-climbing; and while the foregoing classification is excellent and most descriptive in that area, it does not apply to mountaineering above the snow-line, or even to any great extent to Scotland. In the history of Alpine climbing there are certain outstanding dates which climbers generally accept as epoch-making. These are: the first ascent of Mont Blanc in 1786; the ascent of the Wetterhorn in 1854 by Alfred Wills; the first ascent of the Matterhorn in 1865; the first ascents of the Aiguille des Charmoz, the Zmutt Ridge of the Matterhorn, and the Aiguille de Grépon by A. F. Mummery in 1879-81; and the first guideless ascents, all by British parties, of the Charmoz, Grépon, Requin, Zmutt Ridge, and Brenva Ridge of Mont Blanc in the period 1892-94. To Mummery belongs the credit of starting the "difficult" way period, and this after a steady development for some fifty years has now gradually degenerated into the "face and piton" period of the present time.

The first ten years of our Club, therefore, coincided with the rise of guideless climbing in the Alps and with the Ridge and Arête period in the Lake District.

These guideless pioneers played an important part in developing Scottish climbing, and the most prominent names were J. H. Gibson, J. N. Collie, Chas. Pilkington, and G. A. Solly, who all became members of the S.M.C. in its earliest years. Pilkington had visited Skye as long ago as 1880, and made the first ascent of the Inaccessible Pinnacle along with his brother Lawrence, who is happily still with us. In 1888 he climbed Clach Glas, and in 1889 his article on climbing in the Cuillin appeared in the *Alpine Journal*. Gibson from the very first took an active part in the affairs of the Club, and his early ascents include the Black Shoot, the north-east face of Ben Lui, and A'Chir in Arran (on which a piton was used!). In 1892 the brothers Hopkinson climbed the Tower Ridge and N.E. Buttress of Ben Nevis, and in 1894 Collie, Solly, and Collier made the famous onslaught on Glencoe and Ben

Nevis, their bag including the north-east face of Buachaille Etive (Collie's Route), the face of Stob Coire nam Beith, Collie's Pinnacle and Gully on Bidean nam Bian, the cliffs of Stob Coire nan Lochan, the north and west faces of Aonach Dubh, Ossian's Cave, and the Tower Ridge. This last expedition is most amusingly described in the *Journal*, "The Divine Mysteries of the Oromaniacal Quest."

These exploits by Alpine-trained men had an immediate effect on the local talent led by W. W. Naismith. Naismith, of course, had had considerable Alpine experience, having amongst other expeditions climbed the Ober Gabelhorn in 1892 without guides. He and Gilbert Thomson, James Maclay and Douglas, W. Tough and W. Brown, J. H. Bell, Napier and Green, and many others started a thorough exploration of the climbing possibilities of our Scottish hills, which extended for some ten years to 1905. In 1896 Harold Raeburn appeared on the scene, and his remarkable skill and dominating personality may be said to have moulded the subsequent pre-war climbing activities of the Club.

During the first few years the Club's activities were mainly devoted to the exploration of the main ridges and easy snow-fields of the wonderful array of Scottish Bens whose existence was only then becoming known, thanks largely to the labours of Sir Hugh Munro whose famous "Tables" had appeared in Vol. I. of the *Journal*. Professor Ramsay, our first President, was a member of the Alpine Club, and Naismith, Maylard, R. A. Robertson, and Munro had some Alpine experience. These were all active members of the Club, but probably J. H. Gibson was the man with the greatest experience in the early days of the Club. Naismith, however, almost at once came to the front, and for the first ten years was undoubtedly the leading force in Scottish climbing. The famous "pick *v.* spike" controversy between Naismith and Gibson in Vol. II. of the *Journal* makes interesting reading. Subsequent opinion seems to support Naismith's contention that the spike should be used as a "prop on unmitigated ice" rather than the pick as a "tie." J. H. Bell and Harold Raeburn joined

the Club in 1894 and 1896 respectively, and the former for four or five years was the most enterprising of the younger brigade, but Raeburn soon established himself, and for twenty years was our leading Scottish mountaineer with a reputation extending from the Alps to Norway and the Caucasus.

With Naismith one associates, of course, Gilbert Thomson, and those two, sometimes with James Maclay or William Douglas, and later with J. H. Bell, were largely responsible for the development of snow climbing in Scotland. Although Naismith and Maclay were both fine rock-climbers, it must be admitted that it was Professor Norman Collie's exploits in Glencoe and on Ben Nevis in 1894 that gave the first real stimulus to rock climbing in Scotland. Prior to this, if we exclude the Hopkinsons' climbs on Ben Nevis in 1892 and the Pilkingtons' climbs in Skye, the only rock climbs of any note were the Black Shoot and the Ben Lui rib in 1892, the Pinnacle Ridge, Sgurr nan Gilleann, and the West Buttress of Sgumain in 1893, and the Cir Mhor cliffs in 1894.

In the year 1895 the Club were at Fort William for the Easter Meet and the Castle Ridge and several gullies were climbed, and also the N.E. Ridge of Aonach Beag by Naismith's party. In May, Tough and Brown cycling from Dalwhinnie climbed the N.E. Buttress of Ben Nevis under the impression that it was a new climb. In August the same party made their famous route on Lochnagar—the Tough-Brown Ridge, and also the fine climb up the rocks to the east of Ossian's Cave in Glencoe. J. H. Bell's party climbed the very difficult B-C rib on Cir Mhor, and made several routes on the Cobbler and on Buachaille Etive. Professor Ramsay made what he thought to be the first ascent of the west face of Suilven, only to find that he had been forestalled by Horace Walker and Chas. Pilkington. 1896 was also a good year. Tough, Brown, and Raeburn climbed the cliffs of Coire Ardair. Naismith made his historic ascent of the Crowberry Ridge, and also of the Castle of Carn Dearg (Ben Nevis). The Douglas Boulder at the foot of the Tower Ridge was climbed by Brown, Raeburn, Hinxman, and

Douglas. The exploration of the gullies and ribs on the north-east face of Ben Lui was completed by Maclay and others. In Skye the 2,500 foot climb on the Coruisk face of Ghreadaidh and the north-west climb on Alasdair were done by Collie's party, and J. H. Bell completed the climb of the famous Water-pipe Gully on Sgurr an Fheadain.

In 1897 the second ascent of the Black Shoot was made by Bell's party, and a third ascent on the following day by Raeburn and Maclay. This is not an easy climb, and conditions in the Shoot are usually foul. It was at this time (Vol. IV., p. 347) that Bell carried out his interesting experiments in regard to the strength of the standard climbing rope. In his report he states that the deadweight supported by the rope with a bowline knot was 1,456 lbs., and that a weight of 11 stone falling clear through about 9 feet would break a 20-foot rope suspended from a rigid belay.

1898 was a specially good year. The cliffs of Coire Mhic Fhearchair and the Chasm of Buachaille Etive were explored. The Church Door Buttress on Bidean nam Bian was finally conquered by a party led by Raeburn and Bell. Raeburn's Gully on Lochnagar was climbed. Naismith found a route up the Carn Dearg Buttress of Nevis and named it the Staircase. He also, with Mackay, made his famous route on the south face of the Bhasteir Tooth. King's Chimney on Sgurr Mhic Coinnich and the Bhasteir Nick Gully fell to W. W. King, who also climbed the S.W. Crack on the Inaccessible Pinnacle safeguarded by a rope from above.

For ten years, therefore, climbing in Scotland had made steady progress and might almost be said to have reached its "peak" in 1898. Thereafter the initial impetus gradually slackened and almost died away in spite of sporadic outbursts until 1908, when a new enthusiasm arose and spent its energy mostly among the wonderful chimneys and faces of the Cuillin. This period, of course, came to an abrupt end in 1914.

During the ten years of the ebb the most notable climbs were on Ben Nevis, and no doubt the enterprise shown here was largely the result of Dr Inglis Clark's

determination to make his "Ben Nevis Guide" the success which it eventually proved to be. Raeburn made his solitary ascents of the Observatory Ridge and Observatory Buttress and climbed the N.E. Buttress direct from the foot, and Glover forced his way up the Tower Gap Chimney, all in 1901 and 1902. The direct ascent of the Crowberry Ridge was made by Geo. Abraham's party in 1900. In 1903 the cliffs of Coire Ardair were climbed again by Raeburn and the Walkers, and in 1904 the Walkers made a second route up Carn Dearg of Nevis, the Cousins' Buttress. In 1906 M'Laren and Shadbolt did two first-rate gully climbs, the Sugach Gully at Arrochar and Shadbolt's Chimney up the north face of the Bhasteir Tooth. Another notable climb was Collie's discovery and ascent of the Cioch a'Sgumain in Skye, where a renewed activity was becoming apparent and was to burst forth in 1908 after the publication of A. P. Abraham's "Rock-climbing in Skye." In that year Raeburn made his last and finest new route on Nevis, the North Buttress of Carn Dearg.

From 1908 until the outbreak of war most of the new climbs were done in Skye, where Steeple and Barlow, M'Laren and Shadbolt, J. M. Archer Thomson, and others, were specially active. The magnificent cliffs of Sron na Ciche provided the best climbing ground, and the modern Lakeland School of "slab and wall" experts have found here a grand and more spacious playground than that in which they had developed their craft.

On the mainland in 1910 Raeburn's party made the first summer ascent of the Crowberry Gully, a very fine climb, and the following year, a remarkably dry summer, the first summer ascent of the South Castle Gully of Nevis was made. Both of these gullies had, of course, been climbed before under winter conditions when they were purely snow and ice climbs. In the extreme north and west W. N. Ling and G. T. Glover penetrated into various secluded districts and literally unearthed several rock-climbs, but failed to discover any new climbing ground to compete with the more popular districts farther south.

It will be seen, therefore, that mountaineering in

Scotland has had perfectly natural periods of ebb and flow, and that throughout the first twenty-five years of the Club's existence the active rock climbers were comparatively few. The standard of climbing, however, was steadily improving and members were gradually acquiring a "hill sense," and a knowledge of mountain craft which stood them in good stead when they went farther afield to try their skill in the Alps, in Norway, in Canada, and the Caucasus. They could find their way over difficult ground under the worst possible conditions; they could cut steps in snow and ice, and could appreciate the holding qualities of snow on steep rocks or the probabilities of avalanches from these rocks. But the Club had not specialised in rock climbing, and compared with some of the English Clubs might almost be said to have neglected it. One reason for this neglect, and probably the principal reason, apart from the fact that during the summer months most of the best climbers in the Club were in the Alps or in Norway, must be attributed to Scottish weather. During the usual climbing periods, New Year and Easter, most of the principal rock climbs are plastered with snow and ice or running with water. Difficult rock climbing under such conditions is almost impossible, and so the more popular routes were on the great ridges under snow conditions, routes which under dry summer conditions would be the easiest of scrambles. The Tower Ridge of Ben Nevis, for instance, presents no difficulty in summer, but under severe winter conditions in March or April may defeat the strongest party. The Church Door Buttress for years withstood all assaults, but the first determined attack under summer conditions was successful. It is this variation in climatic conditions which makes it almost impossible to grade Scottish climbs,* and this has not seriously been attempted except in the case of the Cuillin climbs. In Skye, unlike the rest of Scotland, almost all the climbing is done in summer, and here we have con-

* Probably the great variety of rock structure in Scotland is also responsible.--ED.

ditions more approximating to those prevalent in Wales and the English Lake District, and to climbers from these districts is mainly due the credit for the rapid development of the sport in Skye in the years just before the war.

In concluding this very brief history of Scottish climbing reference should be made to the following articles dealing with the development of mountaineering in Scotland which have appeared in the *Club Journal* :—

- Vol. II. "Snowcraft in Scotland," by W. W. Naismith.
- „ III. "The Rise and Progress of Mountaineering in Scotland."
 - (a) Introductory—Captain Burt, Dr Johnson, and Daniel Defoe, by J. Parker Smith.
 - (b) Thomas Pennant, by Professor Veitch.
 - (c) John Macculloch, by Rev. Dr Colin Campbell.
 - (d) Miscellaneous, by W. A. Smith.
 - (e) Professor J. D. Forbes, by Principal Sir George Adam Smith.
- „ IV. (f) Conclusion, by Professor G. G. Ramsay.
- „ V. "Scottish Mountaineering, Retrospective and Prospective," by A. E. Maylard.
- „ VIII. "Scottish Snow," by Harold Raeburn.
- „ X. "Some Mechanics of the Rope and Axe," by Gilbert Thomson.

All the above papers are full of interest, and it is most amusing to compare Maylard's three phases of Scottish climbing during the first ten years of the Club's existence with the Lakeland phases referred to at the beginning of this paper. Maylard divides the Club's progress into three periods—the E.S. (easy slopes), the A.P. (absolutely perpendicular), and the O.H. (overhanging). This classification rather confirms the statement made above that 1898 was the "peak" year in pre-war Scottish climbing, as it could not reasonably be expected that much advance could be made when once the overhanging period had been reached! That this assumption was quite incorrect will no doubt be amply proved in the continuation of this history by E. A. M. Wedderburn in the next issue of the *Journal*, when he will deal with post-war events and the rise and progress of piton climbing.

Chronological List of Outstanding Events in Scottish Climbing.

- 1590. An ascent of Stuchd an Lochain in Glen Lyon referred to.
- 1618. Mount Keen climbed.
- 1628. Goatfell, Arran, climbed by Lugless Willie Lithgow.
- 1772. Beinn na Caillich, Skye, climbed by Pennant.
- 1785. An ascent of Ben Lomond referred to.
- 1801. Cairngorm climbed by Hon. Mrs Murray.
- 1810. Braeriach climbed by Dr Keith.
- 1811. Numerous ascents by John Macculloch.
- 1836. Sgurr nan Gilleann climbed by Prof. J. D. Forbes.
- 1847. Ben Macdhui climbed by Prof. Balfour.
- 1848. Prof. J. D. Forbes cuts steps in snow in passing from Glen Spean to Glen Nevis.
- 1865. Sgurr nan Gilleann climbed from Lota Corrie by Sheriff Alex. Nicolson.
- 1873. Sgurr Alasdair and Sgurr Dearg climbed by Sheriff Alex. Nicolson.
- 1880. W. W. Naismith climbed Sgurr nan Gilleann and Bidein Druim nan Ramh (first ascent) in April and Ben Nevis in May.
Chas. and Lawrence Pilkington climbed the Inaccessible Pinnacle.
- 1889. S.M.C. founded.
- 1892. Tower Ridge and North-East Buttress of Ben Nevis climbed by the brothers Hopkinson.
- 1894. Prof. Norman Collie's party's rock climbs in Glencoe, etc.
- 1896. Crowberry Ridge climbed by W. W. Naismith.
- 1898. Church Door Buttress, Staircase Climb, King's Chimney on Mhic Coinnich, Naismith's Face Climb on Bhasteir Tooth, Raeburn's Gully, Lochnagar, and other well-known climbs completed.
- 1902. Dr W. Inglis Clark's "Guide to Ben Nevis" appeared in the *S.M.C. Journal*.
- 1906. Prof. Norman Collie discovered the Sron na Ciche cliffs and climbed the Cioch.

RUM.

By E. W. Hodge.

THE Isle of Rum has enjoyed a rather undeservedly bad reputation both for weather and for the roughness of its ground. Certainly, steep islands exposed to the prevailing ocean winds are likely to be cloudy, but the reputation for extra specially rough moors and mountains is quite undeserved. The moors are distinctly less rough than those of Skye, and are not boggy. Fine as the main ridge is, it is not nearly the equal of the Skye Cuillin, and, unlike the latter, need not embarrass anyone seriously even in a gale and mist. If a reasonable indulgence is allowed in side-stepping "boulder problems" the traverse of the main ridge of Rum need not include any climbing.

Scenically, I would not depreciate Rum at all. Its local scenery is quite a distinct type. As regards distant views, Rum is a remarkably focal point—very much more so than the Skye Cuillin. Its outline seems to turn up in the distance (and often much less distant than one expected) all over the West Highlands. Rum, of course, looks straight up Loch Morar just as the Skye Cuillin looks partially up Loch Nevis. Only Glen Dìbidil has perhaps been overrated. It certainly cannot stand comparison with Coruisk. Glen Sannox would, however, be a close comparison, perhaps rather to Glen Sannox's advantage.

The climbing possibilities of Rum are on the whole well indicated by the "Guide." Trallval and the west face of Askival deserve exploration, but time is insufficient for a visit to these on the usual day's motor-boat excursion from Glenbrittle. Allival has a long east face, convenient for those who seek fairly difficult but rather short climbs on excellent rock, handy to the Glenbrittle boat-landing. The quality of the gabbroid rock of Rum is at least as good as that of Skye, and there is far less basalt in proportion.

By way of additional notes, it may be remarked that the crag on the south and west of Barkeval, of which the map indicates a good deal, is much too broken to give

any climbing. It is also somewhat tedious to contour above the 1,100-foot level, as it is intersected by gullies. M. Botterill has described, in the *Yorkshire Ramblers' Club Journal*, 1922, p. 34, a severe climb on the west side of Askival, said to be rather like the Slanting Gully of Lliwedd in miniature. He gives, however, little indication of its precise position. Immediately below the summit of Sgurr nan Gillean is a fine but exceedingly steep small cliff 200 or 300 feet high. Good climbing could no doubt be had on the Torridonian sandstone sea-cliffs, which are at their finest between Dibidil and Papadil, and are beautiful and interesting, quite apart from climbing. The cliffs near the western point of the isle are higher, reaching some 600 feet, but not so good for climbing.

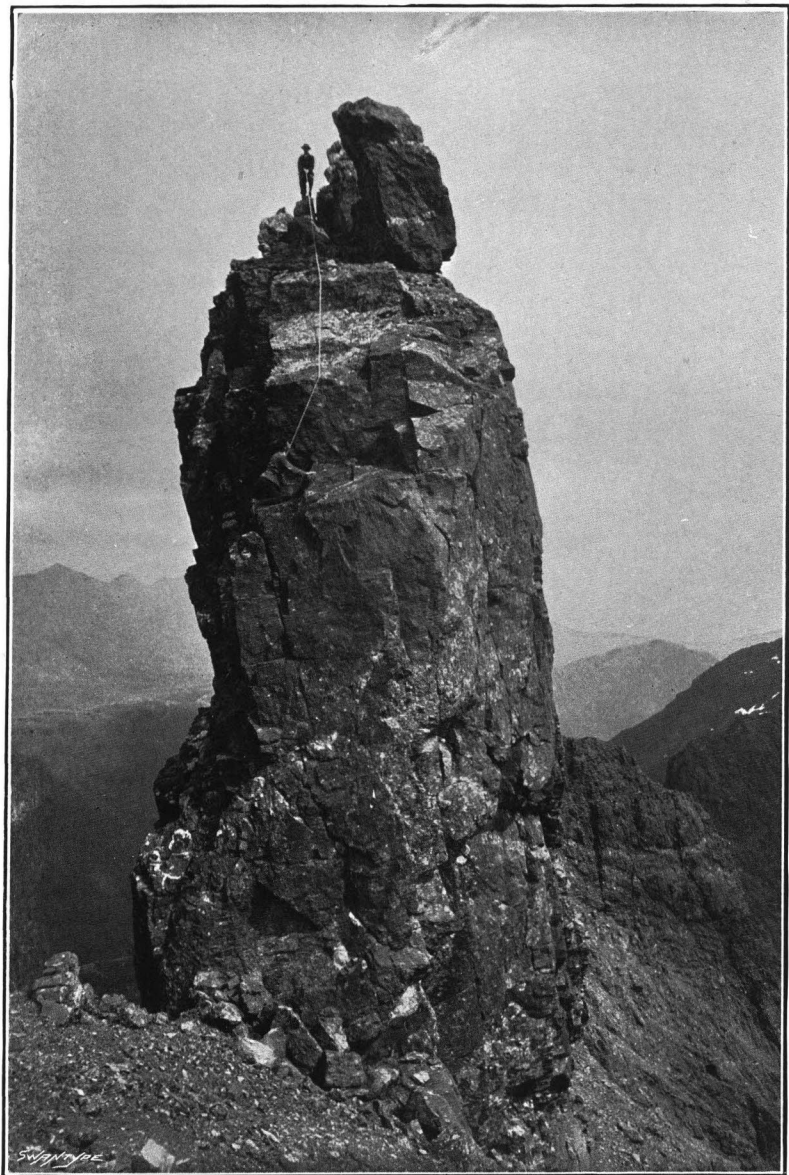
Let us leave the point of view of the gymnast for that of the ridge-walker. The impression which the "Guide" gives of the east ridge of Askival is perhaps a little overdrawn, since the jammed stone mentioned has only negligible exposure. There is no difficulty on this ridge except for bits which no one would think of climbing direct. Another ridge which is transparent in one place is the south ridge of Allival. The one difficulty of the main ridge which is not quite easily turned is the descent of Ashval towards Trallval. Here, I think, the "Guide" says east and eastern, where it should say west, and vice versa, in describing the alternative routes. The route turning the ridge on the west is a little exposed, but quite short. A rope is not necessary as the standard hardly goes beyond scrambling, but unfortunately the quartzfelsite rock is rather like basalt hereabout, and slippery when wet. The eastern route is easier and is mainly scree, but it is necessary on it to diverge from the ridge-line almost at the top of Ashval. These remarks, and those which follow, may be useful on the assumption that Rum is after all rather a misty island; and people who have, after the fashion of globe-trotters, set out to see the sights of Rum in a day may occasionally find themselves a little short of time to return to their boat, and in need of directions.

Therefore if it is not desired to ascend Askival, in returning from the Trallval-Askival col (the Bealach

nan Oir) towards Loch Scresort, one may go with equal advantage either east or west of that mountain, but the western route is the quicker. In the former case one will contour the south slope of Askival, rising scarcely more than 100 feet to pass through the col between Askival and Ben Stac, and thence round the base of the east ridge (1,350 feet) and down the picturesque Coire nan Ghrunnnd, or directly to the path. Care should be taken not to cross right over the Dibidil-Scresort path, which is rather indistinct, but much quicker than floundering over the lower moor in an attempt to follow the coast-line. If one takes the way west of Askival, one will descend the grass slope direct from the Bealach nan Oir into Coire Rangill. The best level to contour this is about 1,300 feet, or some 300 feet above its floor. Finally, one will reascend some 200 feet to the Allival-Barkeval col. Crossing this, a path will be met close to the west side of the Allt Slugan about half-way down to Kinloch. Two hours will easily suffice from Bealach nan Oir, or three from Sgurr nan Gillean. On an exceedingly hot day, a good walker did all the main tops, including Barkeval, in twelve hours from Loch Scresort. On his return he descended direct from Sgurr nan Gillean to Dibidil bay and thence straight up to the top of Ben Stac and back to Scresort by the path. Others, in half a gale of wind and rain, did all the main tops (but not Barkeval or Ben Stac) in nine hours from Scresort there and back. Others, landing at Papadil, walked to Loch Scresort by way of the same tops in about six hours very comfortably. These are quoted as ordinary times, and no attempt was made at fast time. Runsival was not included in any of these walks.

The north of the island is uninteresting, in spite of containing, at Kilmory, the foundation ruins of the church, which is the island's only ancient monument. The west offers fine straightforward walking, and may be approached from near the road junction at the centre of the island by a track which goes to the Bealach at the top of Glen Guirdil, and thence round under the 300-foot escarpment of Orval, on to Bloodstone Hill. This way is better than Glen Seilisder, which is a trifle rough and boggy. There is good going along the cliffs back to Harris.

Curious gravelly stretches are found among the rocky parts of Rum; a convenience for walking so far as they extend. Common Alpine cushion plants are abundant, and the isle ought to become a paradise of flowers as there are no sheep. There are, however, a few goats, which seem to prefer the southern and western coast. On the beach at the head of Loch Scresort eider-duck's nest. Another curiosity of the fauna of Rum is the occurrence of what appear to be domestic hen's eggs, lying about in unlikely places in the open, on the ridges. Possibly these are poisoned ones put down for the benefit of vermin. There are many hundreds of deer on the island, including a tame stag named "Kruger," which hangs about Kinloch. I once spent some time trying to stalk and photograph this creature "close up," and gave up at last; without success indeed, but not without a certain pride in having managed to approach him so near—only to be informed by the village schoolmistress that he sometimes ate out of her hand. There are extensive woods at Kinloch, and there is also a considerably mixed wood in the curious little hollow, close to the sea but sheltered from it, which contains Papadil Lodge and its freshwater tarn. Papadil must be one of the loneliest places in Scotland, as the track to it is very sketchy, and a landing from the sea will only be possible if the weather is quite calm. The small lodges at Papadil and Glen Harris are furnished, but apparently hardly ever occupied; whilst the bothies at Guirdil, Dibidil, and Kilmory are more or less dilapidated. The clearance of the native population of Rum took place in 1828, and was complete, one shepherd only replacing them. The entire permanent population is now about twenty persons, all of whom, unless perhaps the postmistress and the schoolmistress, are servants of the proprietor, and live at Kinloch Scresort, where also stands the huge red mansion, like a palace without a kingdom, and the public post office, which is connected by telegraph to Eigg and to the mainland. It is still not permitted to land from the mailboat, and the "Guide" seems optimistic in suggesting that accommodation might be arranged. It is not usually possible to obtain even milk.



THE INACCESSIBLE PINNACLE

A. E. Robertson

THE INACCESSIBLE PINNACLE.

By Lawrence Pilkington.

I FIRST visited Skye in 1880 with my brother Charles. We had only one day's climbing there as we were on our way to fish in the Hebrides with an older brother who did not climb. We had an Ordnance Map with us; on it was marked "The Inaccessible Pinnacle." We made the first ascent. I shall always remember that as the noisiest climb I ever had. There was a foot or more of loose rock which had been shattered by the lightning and frost of ages. This formed the edge of the pinnacle and had to be thrown down as we climbed up. The noise was appalling; the very rock of the pinnacle itself seemed to vibrate with indignation at our rude onslaught.

After that we went on to the Hebrides to fish, but the weather proved too dry for any but sea-fishing. We stayed at Tarbert for a week, then caught the steamer at Stornoway and went home. Such an opportunity lost! Most maddening!

My next visit to Skye was in 1883 when Horace Walker, Eustace Hulton, and I made the third ascent of the pinnacle—but how different! Not a single loose rock on the ridge; thick mist all round; 3,000 feet below, the sea visible through a rift in the cloud; nothing nearer to be seen. The cloud stretched away and away all round us, a silver sea with the tops only of the highest peaks standing out like black, rocky islands. No sound! I shall never forget the contrast of those two ascents.

NEW CLIMBS.

Aonach Beag—South-West Buttress.

A PARTY returning from Aonach Beag to the head of Glen Nevis on Jubilee Day 1935 noticed an imposing buttress on the west face of the mountain and decided it was worth exploring. Though there were several visits to the C.I.C.

Hut with the intention of climbing over the arête the calls of Nevis itself were too insistent, and it is a long way over to Aonach Beag. It was not until 7th May of this year that J. A. Brown (J.M.C.S.), T. D. Mackinnon, and B. H. Humble got away from Glasgow at 9.30 P.M., camped out by Loch Leven, and reached the end of the road in Glen Nevis at 8.45 A.M. the following morning. From here the buttress appears on the sky-line in the gap separating Meall Cumhann from Carn Dearg (S.W.) of Ben Nevis. The party climbed up to that gap, though there is an easier route from Steall by Allt Coire Giubhsachan. The photograph* shows the characteristic appearance of the buttress. It is easy to find in clear weather, but it would be difficult to be sure of its position under misty conditions as there is a considerable range of cliffs to the south of it.

The climb started about 3,000 feet (cairn) and gave something of the joy of exploration, varied climbing, some pitches almost severe, and, towards the end, even a period of suspense when the outcome was doubtful and the third man shivered on a ledge for half an hour wondering what was happening up above. The start is by a difficult little chimney to a cave and thereafter in the nature of a zig-zag with a few walking pitches. There is some moss and turf, and the holds often slope the wrong way. At the finish the leader made an immense stride across a little chimney, and then a steep pull up a vertical crack landed him on the summit plateau.

The leader (T. D. M.) had to retreat three times and the party climbed leisurely, taking about three hours. In the end it seemed that the route taken was the only possible one while still keeping on the buttress.

The pitches are all between 40 and 60 feet and there are about eleven of them. There is an escape to the left above the middle portion. The weather was dry with an icy cold wind. Owing to the altitude of the rocks and their exposed situation icy conditions must often prevail, and then the climb could be most severe.

These rocks deserve further exploration. Naming

* Facing p. 70.

gave some difficulty. Because two members of the party refreshed themselves with that delicacy at the foot of the climb the first suggestion was the Raw Egg Buttress. Later, realising the precedent and knowing well the varied appetites of climbers, we changed the name to the South-West Buttress of Aonach Beag. B. H. HUMBLE.

Comb Gully, Ben Nevis.

On the 12th April 1938 a party consisting of F. Gardner Stangle, Richard Morsley, and Percy A. Small made the first ascent of Comb Gully. The weather was exceptionally fine for the time of the year, with a recorded morning temperature of 55° F. Owing to a period of extremely mild weather and an exceptionally wet month of March the gully contained much ice and little snow.

Setting off with a climber's intention of "having a look at it" we cut steps up moderately hard snow, with a small ice pitch in the centre of it, for 300 feet until the gully narrows to a chimney. Here a rock belay safeguarded the second man, who cut up to a niche between the ice and rock and used an ice-axe belay. The chimney had now narrowed considerably, but the left wall contained enough ice to cut steps, which had to be carefully made owing to the brittle quality of the ice. Owing to the steepness of the pitch and the greater dexterity with which the pick of a Piton Hammer could be used, it was adopted for step cutting throughout the ice pitches of the climb. Back and toe work for 20 feet saw the gully curl over to the left, and the retaining wall recede too far right to be any further help. A short bulge in the ice was surmounted and the bed of a deep cut gully gained. This pitch from the rock belay was about 50 feet.

Floundering through softer snow at an easy angle we encountered a rock chimney, which was easily backed up to another ice cave with a rock thread belay. Here substantial foot and hand holds had to be made as the ice wall was approaching the vertical. This ice wall was continuous in its steep angle, and snow in the bed of the gully was not reached until about 50 feet had been climbed from the second man. No rock belay could be found here, but as the snow was sufficiently hard to cut a secure platform an ice-axe belay was used.

The gully now curled to the right, where the steepest pitch yet encountered was tackled. Water falling over a chockstone had frozen into a solid column for 20 feet, the upper reaches of which had partially thawed, suggesting a stance under the chockstone. There was no possible way of continuing save up this pillar. After much

cutting, hand holds were made through the column, and after several descents for rest, the diminishing thickness of the ice contained natural holes less satisfying. The lip made a good stance, and much demolition of icicles hanging from the rock roof revealed a thread belay. A lot of ice had to be removed before a landing on the right wall could be effected. This was disconcertingly free from ice or footholds. On top of the chockstone another cave pitch was found after 30 feet of hard snow. The hole was enlarged to get into this cave, where still another thread belay was found. The second man led to the left of this stance, and, after cutting up a small bulge, was the first to see the summit ridge. An ice-axe belay enabled the leader to carry on up the gully past an easier angled exit on the left to firm rock for a final belay.

An easy walk off from these rocks was now possible. The last rays of the sun lit up the cliffs on our left, only to disappear as the party ate their first meal since breakfast. The climb took eight and a half hours, most of which time was spent on the ice pitches. There were five main pitches in the climb. Three ice pitches of about 50 feet each, a rock chimney 15 feet, and a short ice bulge of about 10 feet. Between these pitches was snow and ice of varying degrees of consolidation and steepness, but not necessitating the cutting of hand holds.

In difficulty the three main ice pitches were all superior to the final ice fall on Gardyloo (which the party climbed the previous day) in steepness, soundness of ice, and technical difficulty. Compared with the ascent of Green Gully the previous Easter, two members of the party considered it to be steeper but safer, as at no time were they without a rock belay. No artificial aids such as pitons, etc., were used in the ascent.

Note.—"Piton Hammer." Slater's hammers with a long spike and a shortened hammer end were used. F. G. STANGLE.

[*Orientation.*—As will be the usual practice in notes of new climbs under the present Editorship, "left" and "right" are used with reference to an *ascending* climber.—Ed.]

Sgùrr Na Làpaich.

Snow Gully from Garbh-choire, 8th April 1938.

This is the big Sgùrr na Làpaich (3,773 feet), occupying a commanding position between Glens Cannich and

Strathfarrar, on the borders of Ross-shire and Inverness-shire, and not the smaller Sgùrr na Làpaich (3,401 feet), which is a spur of Mam Sodhail and lies wholly in Inverness-shire. It is called one of the remoter and more inaccessible mountains of Scotland in the "Western Highlands Guide Book."

The gully rises in the north-western angle of the cliffs, and neatly cleaves the most conspicuous rock-buttress in the corrie from top to bottom, ending on the northern summit ridge, not much below the top of the mountain. The very tiny lochan, which empties north-eastwards down the corrie into the appropriately named Uisge Misgeach and the River Farrar, lies right on the 2,200 feet contour, and the angle of the snow begins to steepen about 300 feet above it. For the top few hundred feet the angle approaches the vertical.

In the very poor snow conditions of April 1938 there was not enough snow in a lower portion of the gully to give sufficient purchase on the hard frozen ground, and a slippery traverse was made to the rocks on the right, which were climbed until they became too steep. After this short detour an excellent belay enabled the first man to be lowered down a 12-foot wall back into the gully, up which he climbed until he in turn could protect the others on the descent of this wall. Thereafter good, steep snow was enjoyed to the top. In normal years the gully should provide a pleasant climb throughout, although the cornice, which was negligible this year, might be correspondingly more formidable. The summit of Sgùrr na Làpaich gives an admirable view across the whole width of Scotland from the North Sea to the Atlantic.

The problem of inaccessibility was solved by using a car which is convertible into a tent with beds. Scotland is an ideal country for using a mobile "land base" of this sort, or a similar base in a small boat on the sea. By alternating in this way between sea and land, every April for five years, the writer has succeeded in reaching most of the inaccessible *gems* with the minimum of delay. Next year will be the turn of the sea. The party were

M. B. Nettleton, H. B. Rowles, and J. H. Johnson, and they also traversed An Riabhachan that day.

M. B. NETTLETON.

Isle of Skye.

Sgùrr na Stri, West Face, 28th April 1934.

On one of the sea-mountaineering trips our little boat was anchored for several days in Loch Scavaig. A rock-climb of generally moderate standard was made from the sea up Sgùrr na Stri, mainly because the weather was so glorious that we wished to reach the quickest summit available, sit down, enjoy the view, and take photographs.

We rowed in the dinghy from the anchorage behind Eilean Glas to the little island near the "Bad Step," and we actually roped in the boat. Starting almost due north-east from this island, we proceeded upwards by a succession of ledges and slabs, first in a north-easterly direction, then back south-east until we came out on the summit (1,623 feet) over a rock, the outline of which suggested the face of the actor George Arliss. Half-way up there was a notable pitch along a 40-ft. crack which slanted upwards over an impressive drop. The holds were excellent, the angle steep, and the situation often sensational. For Sgùrr na Stri is made of the very best Cuillin rock.

Many variations of the route could be made by a party who were living on the sea whenever they wanted a short day, and Loch Scavaig is a grand base, although it becomes a grim prison for a boat in bad weather.

M. B. NETTLETON.

Ben Nevis—Observatory Buttress.

North-West Face.

This face was ascended on 12th June 1938 by a party consisting of Messrs E. J. A. Leslie, W. H. Murray,

E. A. M. Wedderburn, and J. H. B. Bell. The slabby faces were very wet and there was a thick, wettish mist. The height of the rock climb was about 250 feet, standard difficult, and duration fully one and a half hours.

The start was in Observatory Gully, one-third of the way beyond the nose of Observatory Buttress towards the narrows of Gardyloo and in the small indentation of cliff next below the more conspicuous one which contains a very steep gully leading towards the summit rocks. This latter gully, at present unexplored, should yield an excellent winter climb. The line of our route is really that of a steep chimney which must be traversed into from the right some way above its bottom. Several steep slab pitches occur in the climb, but the holds are good. Near the broken crest of the buttress an exit is possible to the left. The party followed a better and longer one to the right, and left a magnificent cairn above this.

J. H. B. BELL.

Isle of Rhum—Askival.

South-East Face.

Between the south and east ridges of Askival is a considerable rock face. It can be divided roughly into three horizontal sections. First a steep rock band about 80 feet high, then an easy scree-covered section, and finally a rather broken face about 400 feet high. This face is bounded on the right by the east ridge, the ascent of which is described in the "Guide Book." To the south of this ridge is a shallow gully, and beyond this and about a third of the way across the face is a steep, well-defined ridge. This ridge was climbed on 28th June 1938 by Iain H. Ogilvie, J. W. Ward, and P. T. H. Holloway.

The first few pitches were steep, but due to the nature of the rock, which was excellent gabbro, they were quite simple. About half-way up, 15 feet from the top of a steep 70-foot chimney, the climber was forced out to the right, to finish the pitch on a steep exposed slab.

Then followed a narrow pinnacle which would not yield to attacks on its face or on the left side. It was turned by a careful balance climb on the right, which led to the neck and the top of the pinnacle. Above this was the most sensational part of the climb. A wall 12 inches wide and 25 feet long led from the pinnacle to the mountain face. It rose at about 30 degrees and was quite easy, being crossed on all fours. The drop on either side was considerable and the wall seemed no wider at its base. It was not broken up, but was simply the edge of a vertical slab. Several easy pinnacles were traversed to the summit ridge about 40 yards from the cairn.

The standard (Ben Nevis classification) was difficult.

IAIN H. OGILVIE.

Skye—Sgurr Dearg.

Southern Buttress.

(With acknowledgments to *The Rucksack Club Journal*, 1938.)

This buttress, between Prof. Baly's climb and Steeple and Barlow's climb of 1912, was climbed on 2nd August 1937 by Messrs B. K. Barber, M. Burton, G. Eisig, and H. B. Law. The height is 210 feet and the classification very difficult.

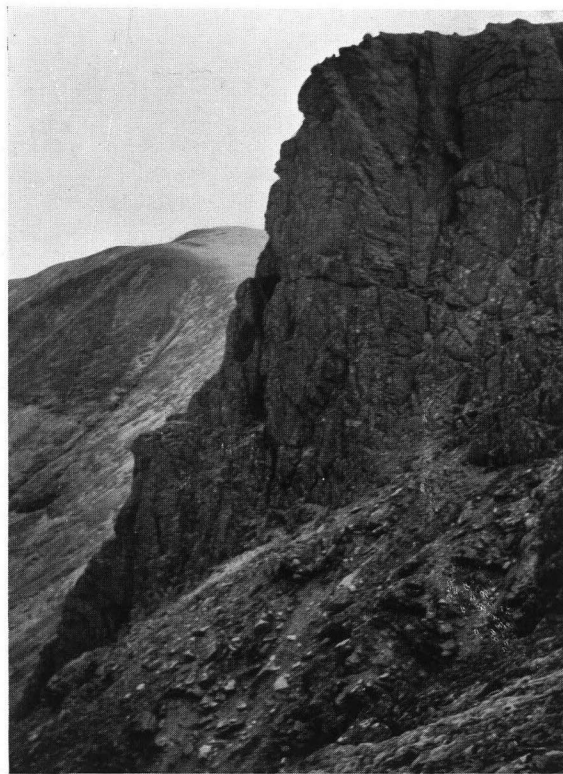
(1) 30 feet from cairn on large grass terrace to a sentry-box with belay. (2) 60 feet. Ascend chimney 10 feet to a sloping ledge on the right, then by a difficult movement to a steep, narrow groove, and so to a small stance and a small belay. (3) 60 feet. Ascend left wall of groove 25 feet, then by a flake cross this to the right wall and climb to a large platform on right. Belay. (4) 60 feet. Follow the groove for 30 feet and finish by 30 feet at an easier angle. Flake belay. Several lines of weakness may now be followed to the summit ridge. The latter two belays are suitable for line only.

Arran—Cioch Na H'oighe.

A Rucksack Club party, L. S. Coxon (leading), G. S. Bower, and A. S. Pigott, achieved a very difficult climb on the cliffs of Cioch na h'Oighe on 18th April



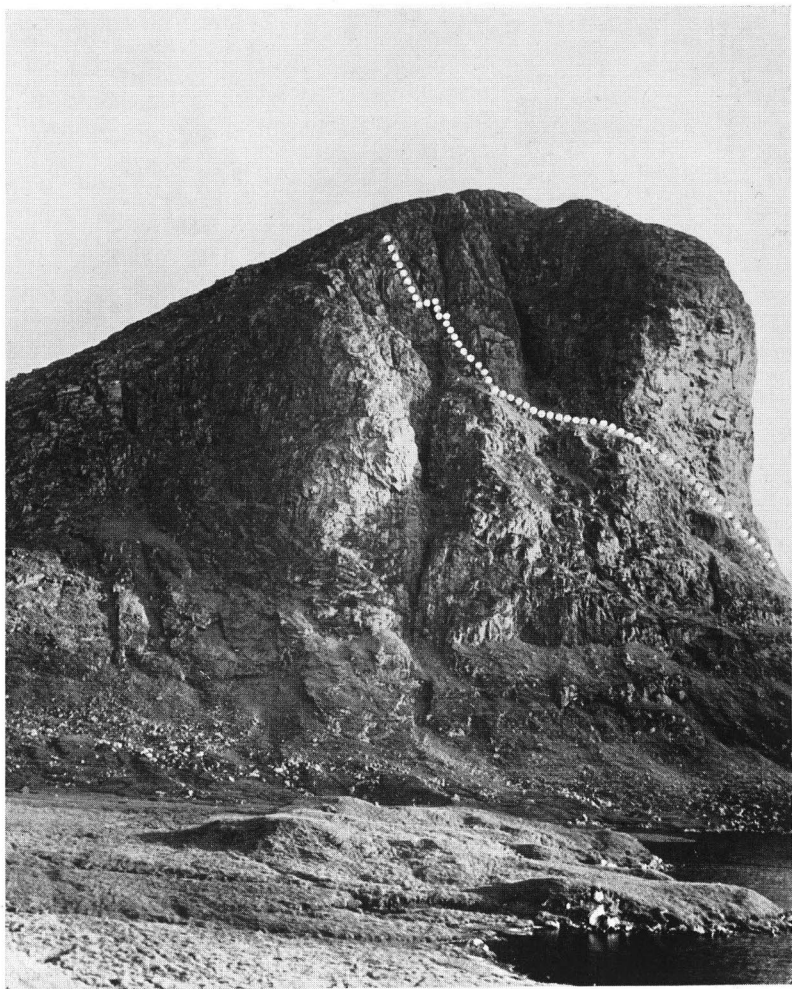
ROSA PINNACLE
CIR MHOR—ARRAN



May 1938

B. H. Humble

AONACH BEAG—S.W. BUTTRESS



By courtesy of "The Rucksack Club Journal"

WEST HARRIS—STRONE ULLADALE
(Central Face)

this year. The length and position may be judged from the fact that the climb starts near the lower left-hand corner of ledge 2 (see diagram in the "Islands Guide Book"), and bending slightly to the right up to half-way, then goes straight up and finishes on ledge 3. It took from one to one and a half hours for this part. The weather was good, dry and cool, and the rocks were dry. The party wore rubbers.

Brief details of the climb run as follows:—

A little way along the No. 2 ledge the rocks overhang. Climb easy heather and rock to the left of this overhang and lodge above it and a little to the right as soon as possible. Climb 50 to 60 feet to a belay.

Hence follow a heather-covered narrow ledge to the left and up to a very steep grassy corner (or heathery), whence climb a vertical wall to the right with a jammed flake (this looks unsafe but is trustworthy) to a short traverse leftwards to a good block belay (60 to 80 feet).

From here a short traverse to the left and a face lead to an easy groove. Thus one gains the No. 3 ledge of the "Guide Book" sketch slightly to the right of the great corner and crack in the main bastion above it.

L. S. COXON.

Arran—East Face of Rosa Pinnacle Cir Mhor— Easter Route.

The climb starts 30 feet left of the gap between the pinnacle and the main mass of Cir Mhor and approximately 200 feet from the top of the gully. This severe route of about 330 feet was first ascended by B. K. Barber and A. S. Pigott (Rucksack Club).

Pitch 1, 60 Feet.—Easy scrambling leads to prominent leaning block.

Pitch 2, 70 Feet.—The crack above is climbed to a grass ledge covered with loose blocks.

Pitch 3, 30 Feet.—The crack develops into a chimney and continues to a grass ledge.

Pitch 4, 40 Feet.—The chimney steepens, and after 40 feet a stance and belay can be gained on and outside the chimney on a large sloping grass-covered ledge.

Pitch 5, 40 Feet.—At the right-hand end of the ledge the wall

above is climbed on small holds until it is possible to traverse left and climb the right-hand wall of the crack, bearing slightly left to a grass ledge.

Pitch 6, 20 Feet.—Traverse left and down a short crack until it is possible to belay at the foot of a steep curving crack. Loose chockstone.

Pitch 7, 40 Feet.—The crack is climbed by jamming the left leg well in and using small holds on the right wall until a good hold is reached on the top of the overhang.

Pitch 8, 30 Feet.—The chimney above is climbed to the summit.

A. S. PIGOTT.

West Harris—Strone Ulladale.

(Abstracted from *The Rucksack Club Journal*, 1939.)

This fine-looking crag with its imposing overhang provides a good mountaineering route up its central face. Although the climb is marred in its lower regions by vegetation, exposed and steep climbing provides a worthy finish. The route described is probably the easiest line up the cliff, and starts at the large grass platform beneath the overhang (cairn).

The total height is 600 feet ; classification, very difficult ; and the first ascent on 2nd July 1938 was effected by Messrs H. J. Irens, F. Solari, and A. Kinnear.

1. Easy slabs to left lead to amphitheatre in centre of crag.
2. Cross the great gully by steep grass to a buttress divided by two chimneys.
3. Climb the right chimney until a severe traverse can be made to a prominent rib.
4. Climb the rib on good holds until a traverse is made across left-hand chimney to another rib.
5. The buttress above provides exposed but not difficult climbing on sound, clean rock.

Buachaille Etive—North Buttress, "Shackle" Route.

Across the Crowberry Gully from and almost opposite the start of the Crowberry Ridge routes is a wide grass terrace with a rather imposing crack starting from it. Up this crack the climb goes up the buttress.

The route was first climbed in good weather conditions and on dry rock, using rubbers, by Sidney H. Cross and Miss Alice M. Nelson on 27th June 1936. The total height of the climb has been estimated at 450 feet, but may be somewhat less. The first two pitches take one up the first steep wall, the third of 120 feet is easier and leads to the next steep section, and the climb proceeds by such alternations. The climb is severe in standard and would not be feasible in nailed boots.

The start is marked by a cairn and arrow. The crack is probably mentioned as one of two in "Central Highlands Guide," p. 49. The pitches run as follows:—

1. *80 Feet.*—The crack is awkward to start; using holds on the left wall at about 70 feet a delicate stride is taken to the right into the crack; in a few feet a sentry box is reached with thread belay.

2. *60 Feet.*—Using holds first on the right then left brings one to ledge and finish of crack—belay.

3. *120 Feet.*—Easy climbing bearing slightly to the right, a cairn will be found at the foot of a steep wall.

4. *30 Feet.*—The wall to a rock ledge in a corner at the foot of a very imposing crack. Small belay.

5. *40 Feet.*—Step round the corner on the left, continue traverse for a few feet before ascending on good but small holds to small stance and belay.

6. *60 Feet.*—Climb the groove almost to overhang before traversing for about 20 feet to the right on to an arête (which looks across and down the crack rising from rock ledge pitch 4); continue the arête to ledge and belay.

7. *40 Feet.*—A crack on the left 20 feet, then easier climbing to a belay. Easy scrambling leads to the ridge, bearing right.

S. H. CROSS.

PROCEEDINGS OF THE CLUB.

NEW YEAR MEET 1939—LOCH AWE.

ONCE more Ben Cruachan has smiled upon the Club. Whatever other districts may serve up by way of New Year rain and storm, Loch Awe has been irreproachable during our last four visits. This time we had no great hopes, and the weather forecast on Thursday, 29th December, was most depressing. However, Ben Cruachan had made up his mind to treat that Sassenach institution, the Meteorological Office, with studied contempt, culminating in a riot of sunny winter perfection on Monday and Tuesday, the 2nd and 3rd of January—a fitting reward to those who omitted to return to work too early in the New Year. Except on northern faces the snow was nowhere deep, but there was enough to plaster the upper rocks and to fill the northern gullies with a coating of rice powder, or Everest-type snow overlying old, icy névé, or frozen turf.

Life in the Loch Awe Hotel was very comfortable. As nearly everyone disported themselves on the ridges during the day, so the dinners and the evenings were alike enjoyed. On New Year's Evening the President announced at dinner that it was the eightieth Club Meet attended by ex-President W. N. Ling. We all joined with the President in our congratulations and in our confident wishes and expectations that Ling would complete his century in due course, whereupon Ling made a brief and cheerful reply. It is interesting to remark that Ling's first attendance (as a guest) was at the 1897 Yachting Meet described elsewhere in this number, so that it is clear that he has missed very few Meets since then. On this occasion he visited Cruachan, Taynuilt, and main peaks and Meall Cuanail on Friday, the Horseshoe and Beinn Bhuidh on Saturday, and Beinn Donachain on Sunday. If he had waited for



Percy Donald

BEN CRUACHAN, MAIN TOP AND STOB DEARG, FROM DROCHAID GLAS



LOWER GLEN NEVIS

Sgurr a' Mhaim on left and Stob Ban on right

J. R. Young

the really fine weather there is no saying where he would have got to. W. N. Ling is surely an almost perfect example of how the ascent of Scottish Bens in all seasons and conditions can train and equip a man for successful campaigns among the greater mountain ranges, and we accordingly add a brief summary of his mountaineering achievements abroad as an incentive to our younger members.

In many of the following climbs Ling was partnered by Harold Raeburn. There is no striving after a complete enumeration: space forbids. Some of his Scottish ascents are referred to elsewhere in this number.

1899.—With G. T. Glover, in the Lakes, Engineer's Chimney and Ling Chimney; in the Alps within seven days with guides—Zinal Rothhorn, Weisshorn, and traverse of Matterhorn.

1900.—With guides on difficult peaks in Dolomites.

1901.—Charmoz, Blaitière and others with guides.

1902.—Géant, Moine, Requin, Grépon, and traverse of Mont Blanc with guides.

After this date the expeditions are all guideless ones.

Norway.—Three new climbs, including the face of Slogen, which was not repeated for twenty-five years.

Then follows a tremendous Alpine record, from which we can only select the first ascents and other outstanding items:—

La Mouche (Aiguilles Rouges du Dolent) (first ascent).

First traverse over Flèche Rousse or south peak of Aig. d'Argentière.

Traverse Schreckhorn, Andersongrat and first descent south-west ridge.

First British guideless traverse of Matterhorn by Zmutt and Italian ridges.

First guideless traverse of Bec d' l'Invergnan.

First British guideless traverse of Viereselgrat of Dent Blanche.

First British guideless traverse of Monte Rosa by Macugnaga face.

First ascent of Disgrazia by north face and traverse.

In addition to all this, Ling made an extensive expedition in the Caucasus and climbed five new peaks there. He continues to climb in the Alps every year, but is probably now filling in the gaps he left in former days in the Eastern Alps.

Most parties kept to the Cruachan and Eunaich groups during the Meet, and all the ridges were well trodden. As avenues of approach to the Meet we find Ben More and Stobinian, and also Bens Oss, Laoigh, and Beinn á Chleibh. Ascents of Mullach nan Coirean (Mamores) and Buachaille Etive Beag were recorded. The longest day was done by T. D. Mackinnon and a J.M.C.S. party who went from Cuanail over Cruachan (main top) and all the ridge to Chochuill and Eunaich. Several parties (on Sunday especially) walked round Cruachan, and one party went up Glen Noe and traversed Drochaid Ghlas. The Club was represented at church on New Year's Day.

Several gully climbs were done. On Saturday Harvey, Hunter, and Short were on Y Gully, Cruach Ardrain, while Ogilvie and Traquair attempted but had to retire from the Black Shoot of Ben Eunaich. Bell, Turnbull, and Waterston spent two hours in ascending the conspicuous gully in the north-east face of Drochaid Ghlas just north of the true summit. Next day Ogilvie and Traquair also climbed this gully. On Monday Bell and Turnbull enjoyed another gully climb in the north-west angle between that same peak and the main ridge. Conditions were harder, especially near the top, and a gorgeous display of sunset colours, all unheeded, illuminated the upper part of the climb. A delightful traverse of the main peak and Meall Cuanail by moonlight made ample recompense. On the Tuesday Bell and Elton ascended the main wide gully north of Stob Garbh, just east of the stepped rocky buttress running up from the Horseshoe Corrie. Several other discoveries were made, including a severe 30-foot gully on Ben Eunaich visited by a large party on New Year's Day, and on Monday a gully on the north face of Cuanail and a good glissading gully on the south face of Cruachan.

The attendance of members, at one time or another, was 54 and of guests, 8. The number known to be on the hills on the various days was: Friday, 5; Saturday, 43; Sunday, 50; Monday, 48; Tuesday, 10.

The personnel was as follows :—

The President, Mr R. Jeffrey, and Messrs J. L. Aikman, F. D. C. Allen, J. H. B. Bell, J. F. A. Burt, J. W. Baxter, L. St. C. Bartholomew, M. H. Cooke, I. M. Campbell, I. G. Charleson, R. R. Elton, H. Gardner, A. Harrison, A. Horne, D. J. S. Harvey, K. K. Hunter, A. G. Hutchison, N. L. Hird, J. Gall Inglis, R. M. Gall Inglis, J. S. M. Jack, I. G. Jack, W. G. P. Lindsay, W. N. Ling, G. Murray Lawson, T. D. Mackinnon, R. W. Martin, R. W. B. Morris, D. Myles, D. Mackay, H. MacRobert, W. A. Morrison, J. Y. MacDonald, G. Graham MacPhee, J. G. MacLean, I. H. Ogilvie, J. Neil Orr, J. G. Osborne, A. W. Russell, A. C. Russell, T. G. Robinson, R. N. Rutherford, C. R. Steven, C. M. Steven, J. A. Scott, R. M. Scott, W. B. Speirs, H. W. Turnbull, R. N. Traquair, S. Pointon Taylor, T. E. Thomson, P. J. H. Unna, G. C. Williams, W. Waddell (members), and W. A. Dovey, P. A. Fletcher, J. G. Houston, G. S. Russell, F. R. P. Nimmo Smith, D. Short, D. J. Waterston, D. Waterston (guests).

J. H. B. B.

RECEPTION.

THE Annual Reception, held in the Charlotte Rooms, on Friday, 2nd December, must have produced, in those who remembered the early days of the Club, a consciousness of its enormous development in the last half-century which the evening's proceedings could only confirm. A great gathering of members and guests proceeded from the tea-tables to a screen entertainment which was cinematographic throughout. A brief but lovely colour film by Harry MacRobert, showing the Cruachan range from Ardbrecknish, was succeeded by his now historic "Crowberry Ridge"; thereafter we enjoyed Bartholomew's "Window-Tower Buttress" and "Pinnacle Ridge." The programme concluded with the same artist's "Salisbury Crags." In this, while production, photography, and climbing were all of a very high order, star honours indubitably went to a little white dog, who evoked a cheer all to himself.

J. F. A. BURT.

ANNUAL MEETING, 1938.

THE Fiftieth Annual General Meeting was held the same evening at 6 P.M., Mr P. J. H. Unna, President, in the chair. The Hon. Treasurer presented his report, showing a favourable cash position but predicting a heavily overdrawn bank account in a year's time owing to expending of Jubilee Fund and cost of "Southern Highlands Guide Book." As regards the Stretcher Fund the Committee were meanwhile seeking co-operation with other Scottish Clubs before increasing the number of first-aid posts in Scotland. The Hon. Secretary reported a present membership of 307, there having been 6 deaths, 1 resignation, and 8 new members elected since last meeting. A tribute was paid to the Meets Secretary. The Librarian reported little borrowing of books but many borrowings of slides. The slide collection had been greatly enriched by a large and valuable gift from the collection of the late Percy Donald. The "General Guide Book" Editor reported sales of 1,435 copies during the year, the publication of the new edition of the "Cairngorms Guide" in September, and the expectation of the issue of the "Southern Highlands Guide" in the spring of 1939. The Hut Custodian reported 281 Hut nights as against 197 for the previous year. The Hut was in good order. New Office-bearers and Committee were elected. The New Year 1940 Meet was fixed for Arrochar and the Easter Meet for Arran. The Hon. Editor made his customary statement. Mr R. M. Gall Inglis then reported progress on the Index to Vol. XXI., and also to Vols. XI. to XX., which latter was to be abridged somewhat and done by a duplicating process. The Editor then submitted two new cover designs. On a vote being taken it was decided that there should be a new cover, that the second design was more or less acceptable, and that the Committee should approve the final design to be adopted.

FIFTIETH ANNUAL DINNER.

Charlotte Rooms, Edinburgh, 2nd December 1938.

A MUCH-REGRETTED though fortunately not serious accident deprived the Club's Jubilee Dinner of the presence of our Honorary President, the Duke of Atholl, K.T. The function was otherwise in every way worthy of the occasion. The five original members present—Messrs F. O. Bower, A. E. Maylard, A. J. McCandlish, R. A. Robertson, and Gilbert Thomson—must have felt,

as they gazed at the assembly of over a hundred and fifty members and friends, and at the sixteen Presidents of British Mountaineering Clubs who were their fellow-guests, that they had builded better than they knew, and created an institution not unworthy of the Scottish hills.

When the business of eating (dignified and enlivened by the solemn Piping In of the Haggis) had been relegated to the past tense, Unna, our President, in a delightfully characteristic speech, proposed the toast of "The Club." He intimated, to our great satisfaction, that Professor Norman Collie had just been made an Honorary Member. Then came the oratorical *tour de force* of the evening—the two-minute speech in which A. E. Robertson achieved real and moving eloquence in praise of the Bens and Glens. Jack excelled both our memories and expectations in the "Club Song," to which he had added a special verse in praise of our Founders. Then Harry MacRobert proceeded, with the confident daring of a *cordon bleu*, to mix salt and sweet in his tribute to our Guests. The resultant confection captivated the taste of the diners: his infinite jest and most excellent fancy set the tables on a roar. Sir Claud Schuster, replying for himself and his fifteen fellow-Presidents, delighted us with the polished wit and mature wisdom of which he is a master; and Gilbert Thomson spoke of the inception and early days of the Club, with that quiet and gentle humour, overlying something essentially hardy, which those of us who remember his presence at Meets and the pages he contributed to this *Journal* were happy indeed to recapture. We thought of that journey to the 1892 Inveroran Meet which started from Dalwhinnie, and hoped that our own petrol-borne generation had developed some equivalent virtue to make us fit successors to our Founders.

Jeffrey, our President-elect, proposed his predecessor's health in a neatly effective speech, emphasising the energy and resource with which Unna had followed up a suggestion first made by Wordie, our Vice-President, to its triumphant conclusion in the acquisition of Dalness Forest for the National Trust. The proceedings terminated with "Auld Lang Syne." J. F. A. B.

Professor J. NORMAN COLLIE.

PROFESSOR COLLIE, who has recently been elected an Honorary Member, is one of the most distinguished mountaineers alive to-day. His explorations range all over Great Britain, Norway, and the Alps, as well as to the Canadian Rockies and the Himalaya. He joined our Club in 1891 and the Alpine Club somewhat later. He is a link with the classical epoch of Alpine exploration and climbed much with Mummery, Slingsby, and Hastings, as well as with Stutfield and Woolley in Canada.

His Scottish pioneering work with Colin Phillip, and later with others, was most fruitful. He contributed an early article to the *Journal* on the height of the Cuillin, but his finest piece of writing—in praise of Skye—is in an article, “A’Chuillion,” Vol. IV., p. 239, and a great part of this appears in the “Skye Guide Book.” Again in “A Reverie,” Vol. V., p. 93, he writes charmingly of past expeditions, and in Vol. III., p. 151, there appears a wonderful piece of humorous imagery “. . . on the Divine Mysteries of the Oromaniacal Quest,” by Orlamon Linecus. A general idea of some of his expeditions abroad can be obtained from his “Climbing on the Himalaya and other Mountain Ranges,” which was published in 1902, and is in the Club Library.

Only a few notes on some outstanding expeditions and explorations can be given here. From 1891 onwards he climbed a great deal in the Alps. An ascent of Mont Blanc by the Brenva route involved the party in a benightment and a hard struggle next day to complete the climb. On another occasion a first ascent was made of the Dent du Requin. Many new expeditions were made, mostly in the Mont Blanc region. In 1901 Collie visited the Lofoten Islands with Woolley, Hastings, and Priestman, and climbed several new rock peaks. From 1898 onwards he made several expeditions to the Canadian Rockies, and in 1898 climbed The Dome (11,650 feet), the only mountain in North America which feeds three different oceans with its snow-fields. This is situated in

the Columbia region of which this was the first exploration.

Collie, along with Hastings and Bruce, were with Mummery on Nanga Parbat, when a great deal of fine exploratory work was accomplished. He records Mummery's gallant attempt on the Diamirai face of the great mountain, and the last sight of Mummery and his two Ghurkas on 24th August 1895.

J. H. B. B.



Sketch by Mr T. FRASER S. CAMPBELL

NOTES AND EXCURSIONS.

The Editor will be glad to receive brief notices of any noteworthy expeditions. These are not meant to supersede longer articles, but many members who may not care to undertake the one will have no difficulty in imparting information in the other form.



Accidents on Scottish Hills from 30th September 1937 to March 1939.

29th December 1937.—Ulrich Jacobs (21), killed on Ben Lawers—slipped on a patch of snow and fell down a gully. Search party called out. None of the climbing party were equipped with ice-axes.

3rd January 1938.—N. Porteous and R. H. Buchanan (J.M.C.S.) benighted on Buachaille Etive Mor. Search party called out.

1st May 1938.—George M'Kay fell when descending Binnein Mor and rolled down 100 feet. Rescue party with stretcher called out.

30th May 1938.—James Waugh (32) collapsed when taking part in the race "up Ben Nevis and back." Carried down mountain on stretcher and taken to hospital.

29th July 1938.—Mr J. D. Kay, a retired Government official, collapsed and died after climbing up Great Stone Shoot of Sgurr Alasdair. Had been in ill-health; death attributed to heart failure. Stretcher party called out.

28th August 1938.—Capt. M'Cormick and Rev. C. H. Dick lost their way when climbing the Merrick in mist. They separated and descended in different ways. Both got down safely, but on different sides of the hill. Both organised search parties for the other. One search party spent all day on the hills. Aeroplanes called out to assist.

1st September 1938.—Colin Weir (16) killed by falling from near summit of Ceum na Caillich. Very large search parties called out. An aeroplane was called out.

27th November 1938.—Avalanche on Stob a Choire Odhair. J. R. Wood (J.M.C.S.) injured, but was able to get down unaided (see Notes).

12th February 1939.—A. H. Hendry (J.M.C.S.) and Miss S. Cameron benighted on Ben Nevis. Search parties called out from Fort William, Glasgow, and Edinburgh. The climbers left C.I.C. Hut at 11 A.M., in difficult conditions climbed Tower Ridge, reached summit at 7 P.M., spent night in observatory, and descended to Fort William in the morning.

18th March 1939.—Kenneth Dodgson (25), alone and inexperienced, climbed up to Ossian's Cave on Aonach Dubh, lost nerve, unable to descend. Rescue parties called out from Glencoe, Inverarnan,

and Glasgow. Members of L.S.C.C. ascended to cave at dawn on the 19th and let Dodgson down on a rope. One S.M.C. and one J.M.C.S. man arrived later and assisted.

19th March 1939.—William Warnock (28) fell when climbing in the Campsies and broke his leg. Stretcher party called out.

[Note.—No attempt is here made to adhere to any particular definition of "Accident." The aim is rather to preserve statistical information which might later be useful as a guide to First Aid and Rescue Organisation. One such suggestion might be considered now, and that is that members of the rescue organisation will gradually become increasingly reluctant to turn out for what may prove to be only a "benightment." The practice in the Alps is not to send out a search party in such cases until 9 or 10 A.M. next day.—ED.]

Avalanche Accident.

On 27th November 1938, while descending the east face of Stob Choire Odhair a short distance below the summit, J. R. Wood and A. C. D. Small were involved in an avalanche accident. When traversing a broad ledge on snow at an angle of about 45 degrees a large section suddenly avalanched and both men were carried down 300 to 400 feet. The snow was soft and about 2 feet deep. Rain had been falling for some time and something like a storm was still in progress. The top 4 to 5 inches of the snow was saturated and granular, and was packing down under the action of wind and rain. Below, the snow was powdery. It would appear that the avalanche was caused by the top layer sliding off from the powder snow, due to the lateral cutting disturbance caused by the traverse. The debris fan was over 100 feet wide and mostly about 4 feet in depth.

Wood broke an ankle, and the return to Blackmount Lodge was both difficult and trying. One important first-aid hint may be emphasised. In the event of injury to the lower leg the boot should not be removed but tied tightly in place. By doing so it was possible to proceed, carrying almost the normal weight on a fractured tibia.

A. C. D. SMALL.

The Crypt Route—Bidean Nam Bian.

Mr A. S. Pigott writes that this route was first ascended on 15th September 1920 by Messrs Morley, Wood, John Wilding, and himself. The most of the leading was done by the first named, and a good many loose stones were cleared by the party. (*Rucksack Club Journal* (1921), p. 187.)

The Water-pipe Gully, Skye.

I think the pitch mentioned in L. S. Powell's note in the last number is one which I saw climbed about three or four years since by Miss Clare Mallory. It is not unlike the well-known 80-foot pitch, but if climbed direct is rather harder. The easier alternative, taken by the other members of Miss Mallory's party, is a trough on its right which is more awkward than it looks. Soon after these alternatives, and about midway in its total length, the main gully becomes shallow and one can walk out of it on the right. Lower down, Miss Mallory climbed the right-hand wall as an alternative to the 80-foot pitch. I do not know how it compares for difficulty with the latter.

E. W. HODGE.

A Mirage.

In the "Islands Guide" the astonishing statement is quoted that it is possible to see Ireland from Ben More of South Uist. On 16th June 1937 some of our party on the eastern ridge of Ben More, at only some 1,250 feet height, noticed four extremely distant hills, which nevertheless they were convinced were not merely clouds on the horizon. All four were dome-shaped; the two higher ones were close together and to the east of the two lower ones, which also were close together. The higher pair were nearly in line with the tip of Rudha na Hordag, and the westernmost over Roneval. By compass this distant land dropped out of sight almost exactly true south. This direction is only consistent with the hills seen being in Ireland. The least unlikely of these is Slieve Snaght, which is only 2,009 feet high and about 140 miles away. The time was early afternoon, the weather good, and the temperature moderate. This is rather surprising. I have found visibility to be generally poorer in that sector of the horizon.

E. W. H.

Death of Maggie Gruer of Inverey.

Miss Margaret Gruer, friend of generations of climbers in the Cairngorms, died on 11th March at her home, Thistle Cottage, Inverey, at the age of 77.

She was the grand old lady of the Cairngorms, and it was an experience worth remembering to stay overnight at Thistle Cottage or to spend an hour or two listening to her original and independent views. She welcomed weary travellers at all hours of the day and night, and somehow there was always room for them somewhere.

The writer last stayed there towards the end of June 1938. Her

comment on his means of transport was characteristic, "That's an auld rickle o' a thing." She was in the best of form and produced breakfast cheerfully at 5.30 A.M. on a wet Sunday morning. But woe betide the guest who made a blot in her visitors' book!

The news of her death will be deeply felt and regretted by thousands of hill lovers from far and near.

J. H. B. B.

S.M.C. Abroad.

The President, Mr R. Jeffrey, writes:—

We left Greenock on 27th August and after ten days continuous travelling arrived at Lake Louise in the Rockies on 6th September. Our first expedition was by car to Moraine Lake, some 7 miles from Lake Louise, and then by way of the Valley of the Ten Peaks and the Wenkchemna and Opabin Passes to Lake O'Hara. When crossing the latter pass, which is a glacier one, we followed the tracks of a grizzly bear and cub, and were much interested to see the expert way in which they negotiated quite an intricate system of crevasses. From Lake O'Hara we climbed Mt. Odaray (10,175 feet)—a glacier and rock climb.

We then spent an afternoon toiling up under heavy loads to the climbers' hut on Abbot Pass. Next day we climbed Mt. Victoria (11,365 feet) and descended to Lake Louise. A strenuous off-day was spent stalking mountain goats with a camera on Devil's Thumb and the Pinnacles.

We then climbed Mt. Temple (11,636 feet), the highest in the Lake Louise group, from Moraine Lake. The Rockies are limestone mountains, loose and friable, and therefore disappointing from a rock-climbing point of view.

We then proceeded to Glacier, B.C., in the Selkirks, where we stayed with the Warden of the Glacier National Park. Here we climbed Mt. Sir Donald (10,808 feet) and Mt. Uto (9,620 feet), both from the Illecillewaet Trail, and traversed Leda (9,143 feet), Castor (9,118 feet), and Pollux (9,186 feet), all interesting rock climbs. Our final climb was Mt. Tupper (9,239 feet), a fine rock tower above the Rogers Pass. The Selkirks are chiefly firm quartzite and give excellent rock climbing. The climbing is, however, strenuous as there are few huts, and on one occasion at least we had to ascend and descend 7,000 feet in one day! Also, being so late in the season there was practically no snow on the glaciers, which involved us in much more step cutting than we would have had earlier in the season. We were greatly interested in the wild animals. We saw no grizzlies, although there were several about, but black bears, mountain sheep and goats, marmots, porcupines,

and chipmunks were common; we also saw moose and elk on the lower ground.

We were accompanied on all our expeditions by Christian Haesler, one of the C.P.R. Swiss guides. His services were invaluable, as it is absolutely essential in descending into the forest belt to strike the trail, the forests being quite impenetrable. They consist chiefly of hemlock, balsam, cedar, and Douglas firs, with an undergrowth of dense elders.

Mr A. L. Cram writes:—

At Zermatt last August with D. W. Howe and a small Lakeland party. Climbs: Unter Gabelhorn, Weisshorn, Pollux, Lo Besso, Aiguille de la Za, Rimpfischhorn, Riffelhorn. Traverses: Obergabelhorn (N. Ridge from Mountet), Over Wellenkuppe, Zinal Rothhorn (Zermatt to Mountet), Dom-Lenzspitze-Nadelhorn-Stecknadelhorn (Dom Hut). Passes: Col d'Herens (twice), Schwartztor. We camped out. The weather was broken.

Obituary.

It is with great regret that we announce the death on 6th April of Mr J. Gall Inglis, Hon. Vice-President of the Club. An *In Memoriam* notice will appear in our next issue.

We also regret to announce the death of Dr A. S. Russell on 7th April as the result of a glissading accident on Ben Nevis.

REVIEWS.

Himalayan Quest. By Paul Bauer. Nicholson & Watson. 21s. Pp. xxv + 151, 96 illustrations, 4 maps.

The first part deals with the German Siniolchum Expedition, 1936. Four climbers and a few porters approached the mountain by the Zemu Glacier in early August. Siniolchum, 22,620 feet, lies up a side valley to the south of this, and was described by Freshfield as the most beautiful mountain in the world and the embodiment of inaccessibility. At first the weather was consistently bad. Then Nepal Peak, 23,440 feet, was climbed, followed by forty-two hours of snowstorm. At last on 23rd September Siniolchum fell to an attack along the north-west ridge after one bivouac on the ridge in Zdarsky sacks. A dog, Wastl, reached the bivouac spot and returned down the steep icefall by leaping from one to the other of the human ladder of four people! Simvu and other peaks were also climbed, and an exciting journey in continuous and pitiless rain made down the Passanram valley south of Siniolchum.

The second part deals with the Nanga Parbat tragedy of 1937, when seven climbers (all the expedition but one) and many porters lost their lives when Camp IV., at a height of 20,400 feet, was buried under an avalanche of ice and snow blocks during the night of 17th to 18th June, after persistent snowfalls for days and very low temperatures. A search party dug out most of the victims later, after terrible exertions, from a covering of 11 to 15 feet of ice and snow: "They lay in their sleeping sacks in attitudes of peaceful sleep."

J. H. B. B.

The Mountain Way. An Anthology collected by R. L. G. Irving. J. M. Dent & Sons Ltd. 10s. 6d. 656 pp.

This is the most ambitious climbing anthology which has yet appeared. Most climbers will find their favourite extracts in this volume, although lack of an Index (also a feature of Mr Irving's "Romance of Mountaineering") may make it difficult for them to do so. In addition there are many extracts from writings which may be unfamiliar to most climbers and which may lead them happily into new fields of reading. The selection is catholic, ranging from the Bible to Nietzsche, Prince Chichibu to Italian journalists, and from Gertrude Bell to Dorothy Pilley. The book is divided into seven sections, with such headings as "A Way of Change," "Visions Far and Near," and "Its Halting Places." Some may quarrel with these, but as a book of this kind is not intended to be read straight

through, the anthologist's divisions are not really material. This is a pleasant book to dip into occasionally, and has fewer of the shortcomings inherent in anthologies than most.

E. A. M. W.

Unclimbed New Zealand. By J. D. Pascoe. George Allen & Unwin. 16s. 238 pp., 80 illustrations, 3 maps.

This is a very fresh and lively book by a young New Zealander who must have played a leading part in the exploration of South Island. His story is chiefly of the mountains "off the map," and he doesn't trouble us much with the Hermitage and Mount Cook, which seem to be New Zealand's Grands Mulets and Mont Blanc. The greatest difficulties usually seem to arise before the glaciers are reached. Long periods of heavy rain turn the rivers into serious obstacles. Drowning accounts for more climbing accidents than do the mountains themselves. Once a New Zealander has carried his 65-lb. swag for two or three days over untracked country and through dense bush his climbing may begin, but the weather is unlikely to allow him more than three days out of ten in which he can climb. The peaks are of Alpine character, though many of the most attractive are less than 10,000 feet high. Glaciation, however, starts some 3,000 feet lower than in the Alps, and so climbs may be longer. Virgin peaks of all degrees of difficulty and new routes make this part of the world a climbers' paradise.

Various chapters of the book deal delightfully with the pioneers of the Southern Alps, the sheep musterers and gold prospectors. Samuel Butler is shown in a new and, to me, surprising light, and the development and future of New Zealand climbing are traced and speculated upon. Although read in a critical frame of mind, the book ingratiated itself no less by the entire absence of pettifogging climbing cant than by the presence of many refreshing quotations from such varied sources as Flecker and the less freely published books of Ovid. Particularly pleasing was the chapter on nomenclature of peaks. One joins in the author's approval of such names as Stargazer and Moonraker, shares his regrets that Mt. Damfool and Billy the Bastard of Mistake Creek were not allowed, but would call for much stronger condemnation of Mt. Percy Smith and Mt. Stout than his residence in New Zealand perhaps allows.

E. A. M. W.

The Hills of Lakeland. By W. Heaton Cooper. Frederick Warne. 15s. 124 pp., 16 plates in colour, 36 plates in monochrome, and 2 maps.

Both as an artist and as a climber Mr Heaton Cooper has had a long acquaintance with Lakeland—he first saw the sunrise from Hel-

vellyn at the age of eight—and his work is representative of every corner of the district. The accurate portrayal of curve and contour, and the subtlety with which the atmosphere, whether of season or of weather, has been captured, render his paintings powerfully expressive of the spirit of the fells. Among the coloured plates, "West Face of Pillar Rock" and "Great Gable from Lingmell," and among those in monochrome, "Scafell at Sunrise" and "Westward from Glaramara," recall familiar scenes with particular vividness. The book is complementary to the paintings and is in itself a picture of the delights of the Lakeland hills. The author makes occasional passing references to days on the Scottish hills. Perhaps some day his brush and pen will depict as effectively the character of our own mountain scene.

C. R. S.

Rock Climbs. By Richard Frere. A Guide to the Craggs in the Neighbourhood of Inverness. Published by *Northern Chronicle*, Inverness. 2s. 6d. 67 pp., 8 illustrations.

If the climbs herein described are as fascinating as the author's adventures and descriptive powers, then they must be pretty good. The author has youth (he started climbing in 1934 at the age of twelve) and a great enthusiasm. The book is not only a guide book but a vivid tale of adventure. Needless to say, the climbs are often unorthodox, but are a genuine attempt to solve the problems set by Nature. The last pitch on a certain climb goes over grass up to a steep slab: "This should never be attempted alone as a slip would end in the climber falling into the river, which is nearly 300 feet below." At another place, "then the left foothold gave way, and, dangling by my arms, I saw it hit the scree 300 feet below! Great stuff!" and the conclusion of this episode, "So ended the ascent, and it will be a long time before I dare the anger of the mountain gods again on the Conagleann cliffs!"—and this not because of the trivial collapse of a foothold, but because "a boulder the size of a small house bounded over the overhang," narrowly missing the author and his friend. The echoes of this were heard in the distant *Monadhliadhs*! This little book is a masterpiece and would form an ideal gift from a newly wed mountaineer to his wife.

J. H. B. B.

The Alps in 1864. By A. W. Moore. Vols. I. and II. Basil Blackwell. 5s. each volume. 524 pp., 35 illustrations, and 10 maps.

These two delightful volumes comprise No. 5 of Blackwell's Mountaineering Library. They are as well produced, illustrated,

and edited as the others. A charming evening may be spent all too quickly in browsing over Alpine ascents which one has oneself achieved or even failed upon, and the atmosphere of 1864 is less shattering to our pride than these modern days of the Eigerwand and the north faces of Grandes Jorasses and Matterhorn. The historical notes for each chapter are excellent. When are we to have a reprint of Freshfield's "Exploration of the Caucasus" ?

J. H. B. B.

Dow Crag, Great Langdale, Outlying Crags. Climbing Guides to the English Lake District. Published by the Fell and Rock Climbing Club.

This is No. 4 of the Lakeland Climbing Guides and is a compact volume of 172 pages, very well illustrated as usual by the sketches of Mr Heaton Cooper, and a credit to Mr H. M. Kelly, the General Editor. The section authors are A. T. Hargreaves, S. H. Cross, W. Clegge, E. Wood-Johnson, and C. J. Astley Cooper. The climbs are all carefully described and classified, and each section has its list of first ascents.

J. H. B. B.

The Alpine Journal, Vol. L., No. 257. November 1938.

In this *Journal* we always turn first to the Notes and Expeditions, too full to review at any length here. This number is specially rich in its contributions. We would draw the attention of members of the S.M.C. to the note *re* the Albert Heim Hut, an excellent centre for guideless parties. There are two articles on the Himalaya, of which "Masherbrum 1938" is one of the best in the number and recalls to us the retreat of Bauer from Kangchenjunga. A new ascent of Mount Cook, from the east, preceded by an interesting historical account of the climbing on the mountain, and one of the most useful articles on infra-red and coloured photography that we have yet seen, specially appealed to us among the many other contributions. The number is completed with articles on "Grand Canyon," "On Ski through Lapland," a charming article in reminiscent vein—"The Treasures of the Humble"—and one or two others of general interest. The illustrations are well up to standard.

C. W. P.

The Ladies' Scottish Climbing Club Journal, 1938.

This is the second *Journal* published by our Scottish Ladies' Club, the first one having appeared in 1929. As is only right, this is a predominantly Scottish *Journal*. Mrs Jeffrey on "The Rockies," Miss Bell on "Climbs around Mont Blanc," and Miss Blaikie on "Africa" show how widespread the Club's activities are. Mrs Inglis Clark writes most interestingly on the second ascent of Abraham's Route on Buachaille Etive in the days of S. 2 (the second motor car in Scotland). This climb was led by Harold Raeburn. The article is accompanied by a photograph taken, we think, on Abraham's Ledge, showing a gaitered male just disappearing round the corner, while on the Ledge sits a lady clothed in what appears to be the fashion of the day and certainly wearing a most becoming hat. There is a short article on "Climbs before Breakfast on the Salisbury Crag," while Skye is honoured with two articles, "The Ridge," which is really humorous, and a more serious article describing an unofficial Club Meet in Glen Brittle at which excellent climbing, including the right proportion of number fours, was done. "A Reverie on Mullach Coire An Iubhair" revives memories of the '45, while a most interesting short article on the "First Scottish Survey," which was undertaken in 1560 by a clergyman, and on later surveys reminds us how much the Highlands have changed, although in the seventeenth century the men of Lochaber were described by a cartographer as "barbarous, quarrelsome, and especially mischievous, born to warlike exercises or rather to thieving."

E. A. M. W.

The Ladies' Alpine Club Year Book, 1939.

These Year Books have now set a new standard for climbing club publications. This number is interesting, amusing, and good to look at. It contains articles on the Grand Teton, Ruwenzori, Mount Bryce, Zermatt, the Dolomites, the Dauphiné, Albania, Mount Kenya, etc. The list of climbs done by members during the year shows great activity.

E. A. M. W.

Scottish Ski Club Journal, 1938.

This is a pleasant number. E. A. M. Wedderburn describes an early winter ski tour in the Zermatt region. The Scottish season 1937-38 was rather disappointing. The Pliatto folding ski, a most useful and easily transported invention which works well, is described.

J. H. B. B.

British Ski Year Book, 1938.

As usual this is beautifully produced. It contains articles on "Ski-Mountaineering Courses," "On Ski through Alpine Lapland to the North Cape," "Dome and Lenzspitze in January," "Equipment for Ski-Mountaineers," and many others about various aspects of ski-ing and ski racing. Lunn's "Review of the Year" is as stimulating as ever. It is interesting to see that the First Class ski-runner's test is to be revised to make that dizzy honour attainable by those who don't concentrate on racing.

E. A. M. W.

The Rucksack Club Journal, 1939.

This opens with a thought-provoking article, "Mountaineering and War," by J. R. Jenkins. We shall all feel inclined to agree that mountaineering is sport and not war, evoked by love and not hatred or rivalry, an exaltation of the spirit of man in general and not of a race, nation, or class. A charming article, "Stormy Days in Torridon," by John Wilding, will interest our members. Then there are several excellent and well-illustrated Alpine articles, mainly of members' considerable achievements in the Chamonix district last summer. We congratulate the new Editor on a most interesting and attractive journal.

J. H. B. B.

The Journal of the Tricouni Club, 1939.

This pleasant journal contains accounts of holidays in Skye, Wales, Chamonix, and the Dauphiné. Probably the most interesting article is "Narrow Squeaks," by R. Cook, one who is to be commended for both good luck and candour.

J. H. B. B.

THE JUNIOR MOUNTAINEERING CLUB OF SCOTLAND.

Edinburgh Section.

President.—R. O. H. Down.

Hon. Secretary.—A. H. Hendry, 79 Admiralty Road,
Rosyth, Fife.

Membership, 56.

Glasgow Section.

President.—John A. Brown.

Hon. Secretary and Central Secretary for the Club.—
W. H. Murray, 8 Lyndhurst Gardens, Glasgow, N.W.

Membership, 100.

Inverness Section.

President.—T. C. Corsie.

Hon. Secretary.—J. D. Sturrock, 35 Queensgate,
Inverness.

Membership, 20.

Perth Section.

President.—J. S. Kilpatrick.

Hon. Secretary.—J. C. Grant, "Craigellachie,"
Cavendish Avenue, Perth.

Membership, 20.

New Year Meet 1938-39—Bridge of Orchy.

Members.—D. Aitken, J. A. Brown, R. G. Buchanan, R. H. Buchanan, D. L. Campbell, T. C. Corsie, R. G. Donaldson, T. C. Dow, J. R. Down, R. O. H. Down, J. T. Dunlop, P. M. Fea, A. G. A. Findlay, D. Gow, A. M. Grant, A. H. Hendry, E. C. Houston, M. V. Hunter, T. J. A. Hunter, J. N. Ledingham, D. Livingston, J. R. Marshall, J. J. Murray, W. H. Murray, D. McCulloch, jun., T. D. Mackinnon, W. M. McLellan, F. E. O'Riordan, J. D. S.

Paterson, G. Peat, J. M. Porteous, A. M. Smith, J. D. Sturrock, D. T. Waddell, R. D. Walton, T. M. Wedderburn, F. C. Yeaman.

Guests.—H. M. Barkla, J. Buchanan, R. Earlumhead, John Elsey, H. A. Hetherington, R. Y. Lumsden, W. M. Nichols, R. A. Paterson, A. H. Robin.

The Annual Dinner and Annual General Meeting of the Club were held on the evening of 1st January. Both were thoroughly enjoyable. Forty-four members and guests attended.

The weather during the Meet was better than climbers have a right to expect at New Year, and the only bad day was 1st January. The snow was generally hard on the tops and in gullies, and soft everywhere else, but conditions varied markedly from one day to another. As usual no really difficult climbing was done; most members at this Annual Meet prefer late hours and the grosser sort of entertainment to an early start and a hard day.

The climbs recorded ranged far afield from Arrochar to Glencoe and from Lochearnhead to Dalmally, but most members climbed on the Blackmount hills. The only day's work worthy of the Club was a traverse by Brown and Mackinnon of Eunaich, Chochuill, and seven tops of Cruachan. On 1st January Cruach Ardrain was honoured by no less than three ex-Presidents of the Club—Messrs D. Lynden Campbell, J. Jackson Murray, and A. M. Smith, who pooled their resource and experience to attempt the Y Gully. It is not known whether they got up. The only rock-climb recorded was the Curved Ridge of Buachaille by Donaldson and W. H. Murray, a route which they recommend under winter conditions to those who know the ridge only as a rapid descent in summer.

W. H. MURRAY.

Photographic Exhibition.

The Annual Photographic Exhibition and Competition was held on 12th December 1938. The entries, seventy-eight in number, reached the high standard of former exhibitions despite a poor season

from the photographic point of view. In addition to photographic prints, two excellent water-colours were shown by A. C. D. Small, and N. Ledingham's coloured relief map of the Central Highlands evoked much interest and admiration. The number of entries taken abroad was larger than usual, among the best being J. A. Brown's "Descent from Monte Rosa" and "Mont Blanc de Seilon," by W. H. Murray. A. D. S. Macpherson's portrait of a climber, entitled "Robin," was a brilliant study.

The competition was judged by Mr J. A. Garrick of the Fell and Rock Club. Mr Garrick also judged the slide competition, for which there were fifty-three entries. The prize-winners were:—

Photos—General Interest.

First—"The Glencoe Hill," L. Edwards.

Second—"Ben Vair," Douglas Scott.

Photos—Climbing Interest.

First—"Cioch Upper Buttress," W. H. Murray.

Second—"Balance," A. M. MacAlpine.

Slides—General Interest.

First—"Winter Jokes," A. D. S. Macpherson.

Second—"Strath Fillan," W. H. Murray.

Slides—Climbing Interest.

First—"Eastern Buttress, Sron na Ciche," A. Small.

Second—"Ice Pitch, Ben Nevis," A. M. MacAlpine.

A. M. M.

Glasgow Section—Informal Meets.

INVERORAN.—*9th October 1938.—Present.*—Seventeen members and one guest.

Various parties climbed in the Glencoe region in wet weather.

KILLIN.—*6th November 1938.*—Various parties climbed on Ben Lawers and the Tarmachans in wet weather.

ARROCHAR.—*4th December 1938.*—Various parties climbed on Troisgeach, Beinn Chabhair, and the Cobbler under adverse conditions.

LOCHEARNHEAD.—*5th February 1939.*—Fifteen members and three guests were present, and they spent the day on Ben Vorlich and Stuc a' Chroin in normal weather.

GLENCOE.—*5th March 1939.*—Seventeen members and four guests were present. Climbing was done on Sron na Crèise and Ben Starav under wet conditions.

Scottish Mountaineering Club.

OFFICE-BEARERS FOR 1939.

President.

ROBERT JEFFREY.

Vice-Presidents.

J. M. WORDIE, 1937.

J. GALL INGLIS, 1938.

Hon. Editor.

Dr J. H. B. BELL, The Knowe, Clackmannan.

Hon. Secretary.

J. LOGAN AIKMAN, 121 St Vincent Street, Glasgow, C. 2.

Telephones: Central 1864 (office), Milngavie 1759 (house),

Telegrams: "Actuary," Glasgow.

Hon. Treasurer.

JOHN G. OSBORNE, Killnock, Davidson's Mains, Edinburgh, 4.

Hon. Librarian.

E. A. M. WEDDERBURN, 14 Learmonth Terrace, Edinburgh, 4.

Members of Committee.

Prof. H. W. TURNBULL, 1936.

G. G. ELLIOT, 1937.

ALAN HORNE, 1936.

DAVID MYLES, 1937.

D. J. S. HARVEY, 1936.

J. F. A. BURT, 1938.

W. B. SPEIRS, 1937.

IAIN H. OGILVIE, 1938.

R. T. SELLAR, 1938.

Hon. Custodian of Lantern Slides.

G. G. ELLIOT, 14 Ryehill Avenue, Leith, Edinburgh, 6.

Club-Room and Library.

ROOM 31, SYNOD HALL, CASTLE TERRACE, EDINBURGH, 1.

Charles Inglis Clark Hut.

O.C. Hut, D. J. S. HARVEY, 65 Renfield Street, Glasgow, C. 2.

Telephones: Douglas 3615 (office), Western 5855 (house).

Hon. Assistant Editor.

W. B. SPEIRS, 108 University Avenue, Glasgow, W. 2.

Hon. Meets Secretary.

I. M. CAMPBELL, Hazelwood, Dick Place, Edinburgh, 9.

Guide Books General Editor.

Rev. A. E. ROBERTSON, 17 Cluny Gardens, Edinburgh, 10.

When a better CLIMBING ROPE than the

ALPINE CLUB
ROPE

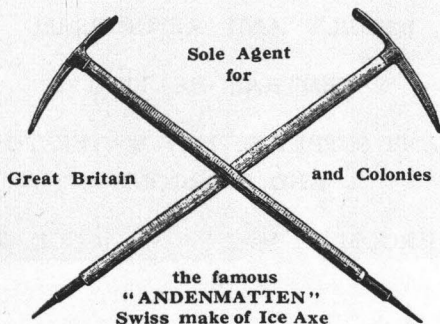
can be made, BEALE'S will make it!

SOLE MAKER—

ARTHUR BEALE

194 Shaftesbury Avenue, London, W.C.2

(Temple Bar 2960)



ARTHUR BEALE

194 SHAFTESBURY AVENUE

LONDON - - W.C.2

TELEGRAPHIC ADDRESS: TEMPLE BAR 2960 LONDON

The Sportsman's Hotel

Where Comfort and Highland Welcome are assured

OPEN ALL YEAR

KILLIN *Bridge of Lochay* HOTEL

REBUILT AND REFURNISHED

CENTRAL HEATING

CONSTANT SUPPLY OF HOT WATER TO BATHS
AND BEDROOMS

DRYING ROOM

GOOD GARAGE

o

MODERATE TERMS

o

TELEPHONE . 22

o

JOHN CAMPBELL CAMERON . . . *Proprietor*



On the Riffelhorn

Photo: Meerkamper

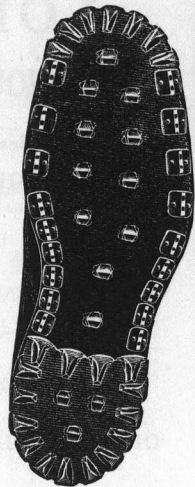
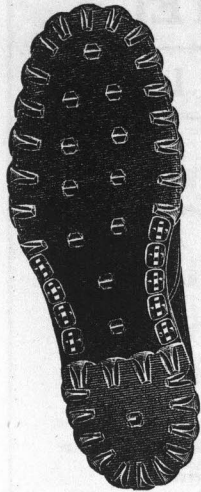
*Enjoy a carefree holiday
in peaceful Switzerland*

and visit the Swiss National Exhibition at Zurich, May 6 to October 29

INFORMATION—Swiss Federal Railways and State Travel Bureau,
11-B Regent St., London, S.W.1.

JAMES S. CARTER

The Alpine Bootmaker



J. S. Carter's
Celebrated Climbing
Boots
£4. 15s.

Illustrated Catalogue
on application

16 SOUTH MOLTON STREET (First Floor), LONDON, W.1



REPAIRS
and
NAILINGS
To all makes
of Boots at
Reasonable
Charges

CLIMBING BOOT and **EQUIPMENT SPECIALISTS**

CLIMBING BOOTS	
Complete with Nailing, from - - - -	29/9
CLIMBING JACKETS	
Double Texture, from - - - -	25/9
ICE AXES	
Various makes and sizes, from - - - -	18/6
RUCKSACKS, from - - - -	8/6
PULLOVERS	
Shetland Hand-knit (4½ ozs.) - - - -	14/-
CRAMPONS, from - - - -	21/-

ROPE, LINE
PITONS
SOCKS, STOCKINGS
GAUNTLETS, Etc., Etc.

Write for Catalogue

ROBERT LAWRIE LTD.

Showrooms and Offices: **38 BRYANSTON STREET, MARBLE ARCH, LONDON, W.1**

Telephone:
PADDINGTON 4993

Inland Telegrams:
"ALPINIST, WESDO, LONDON"

Cablegrams:
"ALPINIST, LONDON"

ARRIVAIN LODGE

FARM HOUSE HOTEL

4 miles west of
TYNDRUM



*EXCELLENT CENTRE
FOR CLIMBING*



OPEN TO NON-RESIDENTS

Terms on application to Mrs ORR

ARROCHAR HOTEL

LOCH LONG

Beautifully situated facing
the Loch



IDEAL CENTRE FOR MOUNTAINEERING



A.A. R.A.C. R.S.A.C.

Apply **JOHN GALBRAITH, Proprietor**

Telephone: Arrochar 27

Telegrams: "Galbraith Arrochar"

CAIRNGORM HOTEL

**AVIEMORE, STRATHSPEY
INVERNESS-SHIRE**



Grounds, 2 acres. Ideal centre for climbing the Cairngorms. Hot and Cold Water in Bedrooms. Central Heating. Golf, Tennis, Fishing, Mountaineering. Open throughout the year. Garage. Boarding Terms. For Tariff and all information apply to **MANAGERESS**.

Own Farm and Garden Produce

Telephone - **AVIEMORE 233**

ENQUIRIES

regarding space for
Advertising in this
Journal should be
addressed to

Mr W. B. SPEIRS

Hon. Assistant Editor

108 University Avenue

GLASGOW, W. 2

PETER DICKSON

BOOTMAKER

76 Bath Street, GLASGOW, C.2

Telephone - - DOUGLAS 3286

MOUNTAINEERING BOOTS

Made to Measure - - 75/- to 105/-

In Stock - - - - 45/- to 61/6

Full Range of Swiss Nails always in Stock

Catalogues and Self-Measurement Forms on request

CHIROPODY - - - J. DICKSON, M.N.Ch.A.

A.A.

R.S.A.C.

KINLOCHEWE HOTEL

. . ROSS-SHIRE . .

10 miles from ACHNASHEEN (L.M.S.) and on mail route
to GAIRLOCH and TORRIDON

CARS FOR HIRE

EXCELLENT CENTRE FOR MOUNTAINEERING
(Situated at the foot of Beinne Eighe)

Fishing free to hotel guests by reservation

JOHN McLAREN - Proprietor

Telegrams: "Hotel," Kinlochewe

Telephone: Kinlochewe 203

LAKE DISTRICT ROCK CLIMBING GUIDE BOOKS

Series completely rewritten

General Editor : H. M. KELLY

In Cloth Boards

1. Pillar Rock and Neighbourhood, *by H. M. Kelly. Published 1936. 2/6*
2. Scafell, *by A. T. Hargreaves. Published 1936. 2/6*
3. Gable, Buttermere, and Borrowdale, *by C. J. A. Cooper, E. Wood Johnson, and L. Pollitt. Now Ready. Published 1937. 2/6*
4. Langdale and Doe Crag. *Published 1938. 3/6*

Obtainable locally, retail, at Chaplin's Library, Keswick, or at "Lake District Herald" bookshop, Ambleside; or by post from Cloister Press Ltd., Heaton Mersey, Stockport, Cheshire.

THE SCOTTISH SKI CLUB JOURNAL

The articles and photographs in this Journal, equally distributed between Scotland and the Alps, are of interest to all mountaineers.

The 1938 issue is now available

Copies, price 2/6 each, post free

may be obtained from

**Mr C. N. FRASER, Hon. Editor
16 Royal Circus, Edinburgh, 3**

Some copies of previous issues are available at the same price

THE SPORTSMAN'S EMPORIUM LIMITED

103 ST VINCENT STREET

GLASGOW

ALL MOUNTAINEERING AND SKI-ING EQUIPMENT

AGENTS FOR

ARTHUR BEALE OF LONDON

LILLYWHITES LTD. OF LONDON

CLIMBING GUIDES TO THE SNOWDON DISTRICT

Editor : G. R. SPEAKER

Published by THE CLIMBERS' CLUB

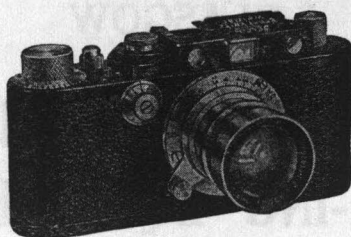
- | | |
|---|--|
| 1. CWM IDWAL GROUP
By J. M. Edwards
<i>New and Revised Edition, 1936</i> | 3. GLYDER FACH GROUP
By C. F. Kirkus
<i>New and Revised Edition, 1937</i> |
| 2. TRYFAN GROUP
By J. M. Edwards and C. W. F. Noyce
<i>New and Revised Edition, 1937</i> | 4. LLIWEDD GROUP
By C. W. F. Noyce and J. M. Edwards
<i>New and Revised Edition, April 1939</i> |
| 5. SNOWDON GROUP (<i>To be published 1940</i>) | |

PRICE 3S. 8D. EACH, POST PAID

A limited number of copies of **THE CLIMBS ON LLIWEDD**
by J. M. Archer Thompson and A. W. Andrews (1909)
are still on sale at the reduced price of 2s. 4d. post paid.

*Obtainable from the Assistant Editor, F. A. Pullinger, 148 Sussex Gardens,
London, W.2, or from Messrs Douglas & Foulis, 9 Castle Street, Edinburgh, 2,
or Messrs William Porteous & Co., 9 Royal Exchange Place, Glasgow, C.1.*

PHOTOGRAPHY FOR THE MOUNTAINEER



LEICA MODEL III.
with F2 Lens

WE have a complete stock of miniature and lightweight cameras suitable for carrying on the most arduous climbs. The results obtained with these models are excellent and enlargements to almost any size can be made.

WE would specially draw your attention to the **LEICA** camera and the range of small folding Zeiss cameras.

CALL in and inspect them, or write or phone, when we shall be delighted to demonstrate them or send full particulars.

**DEVELOPING, PRINTING AND ENLARGING
EXPERTS. SPECIALISTS IN MINIATURE
PHOTOGRAPHY IN ALL ITS BRANCHES**

ROBERT BALLANTINE LTD.
103½ ST VINCENT STREET
GLASGOW, C. 2

Telephone - - Central 5619

SCOTTISH MOUNTAINEERING CLUB GUIDE BOOKS

General, Cloth Covers **4s.** Post, 5d.

Ben Nevis, Cloth Covers **5s.** Revised Edition
Post, 6d. now ready

Island of Skye, Cloth Covers **5s.** Post, 6d.

Including 3-inch to the mile map of the Coolins.

Cairngorms, Cloth Covers **7s. 6d.** Post, 6d.

Western Highlands, Cloth Covers **6s.**
Post, 5d.

Deals with the district West of the Caledonian Canal and
South of the Dingwall-Kyle of Loch Alsh Railway.

Northern Highlands, Cloth Covers **4s.**
Post, 5d. Revised Edition now ready

Central Highlands, Cloth Covers **5s.**
Post, 6d.

Dealing with the district bounded on the South by the
L.M.S. Railway from Oban to Dalmally, and the Moor
of Rannoch; on the West by the Caledonian Canal;
and on the East by the River Spey and Highland
Railway to Ballinluig.

The Islands, Cloth Covers **5s.** Post, 6d.
Dealing with Arran, Mull, Rum, The Hebrides, etc.,
but excluding Skye.

Map of the Cuillin Hills

Mounted on Cloth, **2s. 6d.** Post, 2d.

Reproduced for the Scottish Mountaineering Club from
the 6-inch Ordnance Survey Map of Scotland with
the sanction of H.M. Stationery Office.

Ben Nevis Panorama, 1s. 6d.
Post, 2d.

All the above publications are profusely illustrated and may be had from :

Messrs DOUGLAS & FOULIS, 9 Castle Street, Edinburgh, 2

Messrs WM. PORTEOUS & CO., 9 Royal Exchange Place, Glasgow

OR ANY BOOKSELLER

SCOTTISH MOUNTAINEERING CLUB JOURNAL

In view of the historical interest of this number as regards Scottish Mountaineering

ADDITIONAL COPIES

are available, and may be obtained from the agents or through any bookseller

Price 2s. 6d. Postage, 2d.



A few Copies of most of the back numbers are still available. Full particulars may be obtained from :

Messrs DOUGLAS & FOULIS,

Booksellers and Librarians,

9 Castle Street, Edinburgh, 2